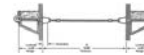
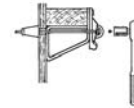
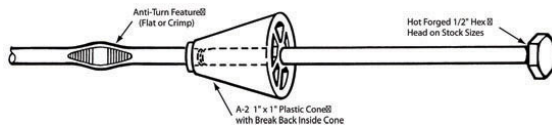


LIGHT FORMING

Brand:
DS
Concrete
Accessories

HEX HEAD SNAP TIE

Product Number:
A-4



[Click Image to View Full Size](#)

Description:

Dayton Superior A-4 Hex Head Snap Ties are manufactured with hot-forged integral 1/2" hex-shaped heads. The hex head allows short-end snap ties to be broken back with the formwork still in place.

Advantages:

2,250 lbs. Safe Working Load

How to Order:

Specify: (1) quantity, (2) name, (3) wall thickness, (4) lumber and wedge dimension (allow 1/2" for wedge take up), (5) break back, (6) type of washer or cone.

Example: 2000 pcs. A-4 Hex Head Snap Tie, 12" wall, 4-3/4" L&W, 1" break back with A-2 1"x1" Plastic Cones.

Purpose:

The standard A-4 uses 1" x 1" A-2 Plastic Cones to provide a nominal 1" breakback. Other size cones are available on special order.

Handbooks

DAYTON SUPERIOR CONCRETE FORMING
HANDBOOK

DAYTON SUPERIOR THREADED SPLICING
SYSTEM HANDBOOK

Related Links

2010 DAYTON SUPERIOR RENTAL PRICE LIST
ACCESSORIES PRICE LIST

Related Downloads

DAYTON SUPERIOR SAFETY INFORMATION
CONCRETE FORMING
DAYTON SUPERIOR CONDENSED CATALOG
GENERAL TECHNICAL CONCRETE FORMING