

# Structural Stair Treads

Abrasive cast metal

- \* LONGEST WEARING
- \* IMPACT REISTANT
- \* ANTI-SLIP SURFACE
- \* ECONOMICAL



American Safety Tread structural stair treads and platforms are in use daily throughout the United States. The anti-slip granules embedded in the walking surface create a positive traction system that lasts for the life of the stairway.

Several designs are self-supporting, requiring no risers or bracing. Other designs are installed with carrier angles and risers. The choices are many.

When a heavy duty commuter stairway or industrial stairway is the design project, structural castings by American Safety Tread will provide the safety required by OSHA.

**LONGEST WEARING:** Effective anti-slip protection is guaranteed for the life of the stairway.

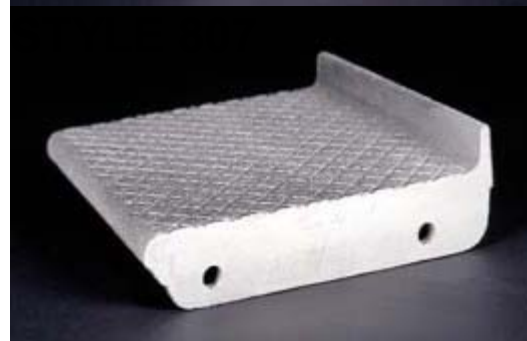
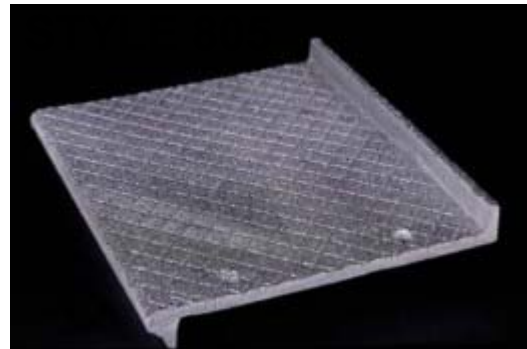
**IMPACT RESISTANT:** The alloys used in the manufacture of these cast structural treads and platforms create highly impact-resistant treads to accommodate heavy interior and exterior use.

**ANTI-SLIP SURFACE:** Whether wet or dry these treads afford maximum protection against slipping hazards. The proper blend of abrasive granules embedded in the exposed walking surface assures secure traction under foot.

**ECONOMICAL:** Available in four metals, these cast structural treads and platforms are the most economical on the market. Our advanced manufacturing equipment and special American Safety Tread molding process assure the lowest cost per unit.

## Choice of Metals

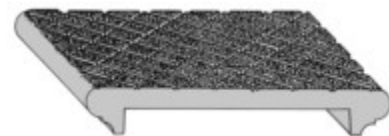
- ALUMACAST** Corrosion resistant, maintenance-free aluminum alloy for exterior and interior use.
- IFERACAST** Cast iron all purpose usage. Withstands heavy industrial punishment.
- BRONZACAST** Rich bronze finish makes this an ideal choice when fine architectural effects must be achieved and maintained.
- NICKELCAST** A combination of cast nickel and bronze designed to blend with stainless steel



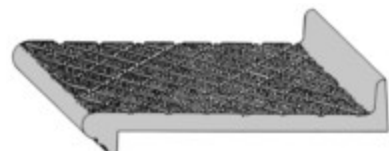
**STYLE 917A**



**STYLE 806A**



**STYLE 807A**



### STAIR DRILLING FOR CARRIER ANGLES AND LUGS

Structural treads and platforms shall be **ELEVATOR SILENOR** 1/2" manufactured by American Safety Tread Company, Helena, Alabama 35080, Telephone 1-800-245-4381. Treads shall be cast in Alumacast, Peracast, Bronzocast or Nickelcast with #24 virgin grain Silicon Carbide granules embedded into the walking surface while the matrix is in a molten state. Treads shall be furnished with front lip design matching the treads. All metals shall be furnished in natural metal finish. Peracast shall have one coat of shop applied black paint.

**Span** 3'-0" To 4'-0" To 5'-0"  
**Thickness** 7/16" 1/2" 5/8"  
**DIAMETER**  
**BOLTS**

**Thickness is for foundry casting purposes and may not be adequate for structural strength.**