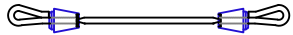


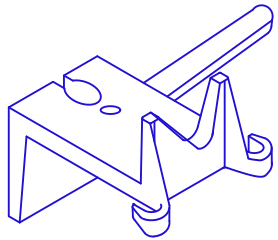


GATES CAM-LOCK BRACKETS & ACCESSORIES

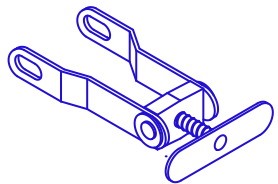
THE VERTICAL 2 X 4 OR 2 X 6 STIFFBACKS MUST ALWAYS EXTEND TO A SOLID BASE, AND BE ATTACHED TO THE CAM-LOCK BRACKETS WITH GATES STIFFBACK CAMS OR THE NEW GATES STIFFBACK CLAMP. USE THREE (3) STIFFBACK CAMS OR CLAMPS PER STIFFBACK AT LOWER PANELS AND A MINIMUM OF TWO (2) PER STIFFBACK AT UPPER PANELS. ALSO, STIFFBACK CAMS OR CLAMPS MUST BE USED DIRECTLY ABOVE AND DIRECTLY BELOW EACH GATES SCAFFOLD BRACKET USED. NEVER ATTACH A GATES SCAFFOLD BRACKET TO THE TOP TIE OF EITHER THE LOWER OR UPPER LIFT. ALWAYS USE THE NAIL HOLES PROVIDED FOR ATTACHING THE 2 X 4 GUARD RAILS & TOE KICK, AND THE SCREW HOLE PROVIDED FOR SECURING THE BOTTOM OF THE GATES SCAFFOLD BRACKETS TO THE VERTICAL STIFFBACKS (PREVENTS "ROLLING" SCAFFOLD BRACKETS).



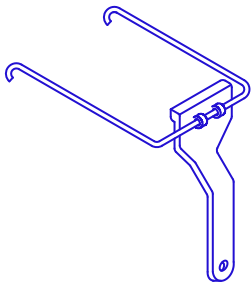
GATES CAM-LOCK TIE
W/ SELF-CENTERING
"D" CONE & 1" B.B.



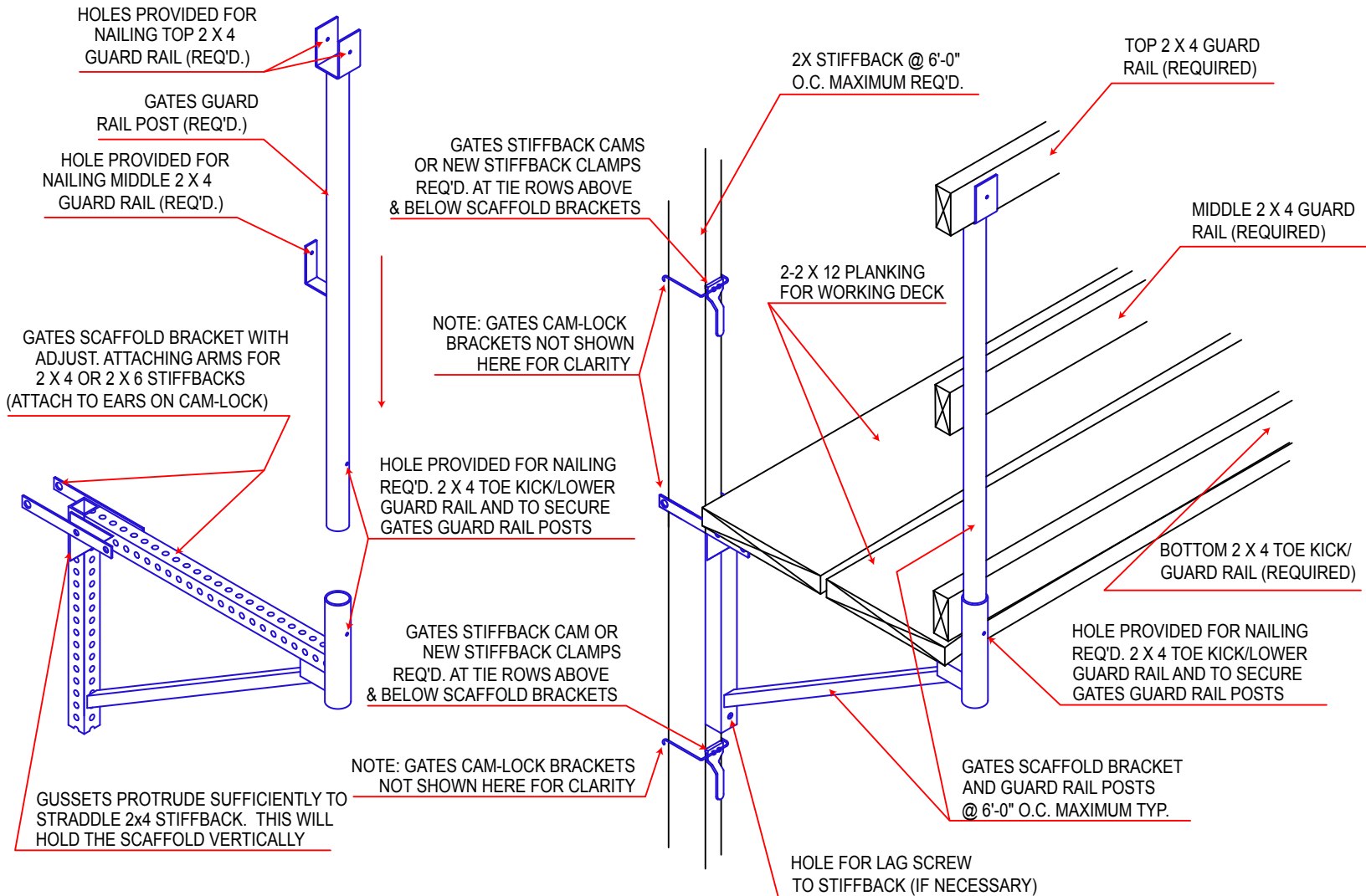
GATES CAM-LOCK BRACKET

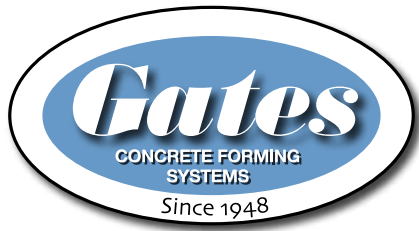


NEW GATES STIFFBACK CLAMP
(SPECIFY 2 X 4 OR 2 X 6)



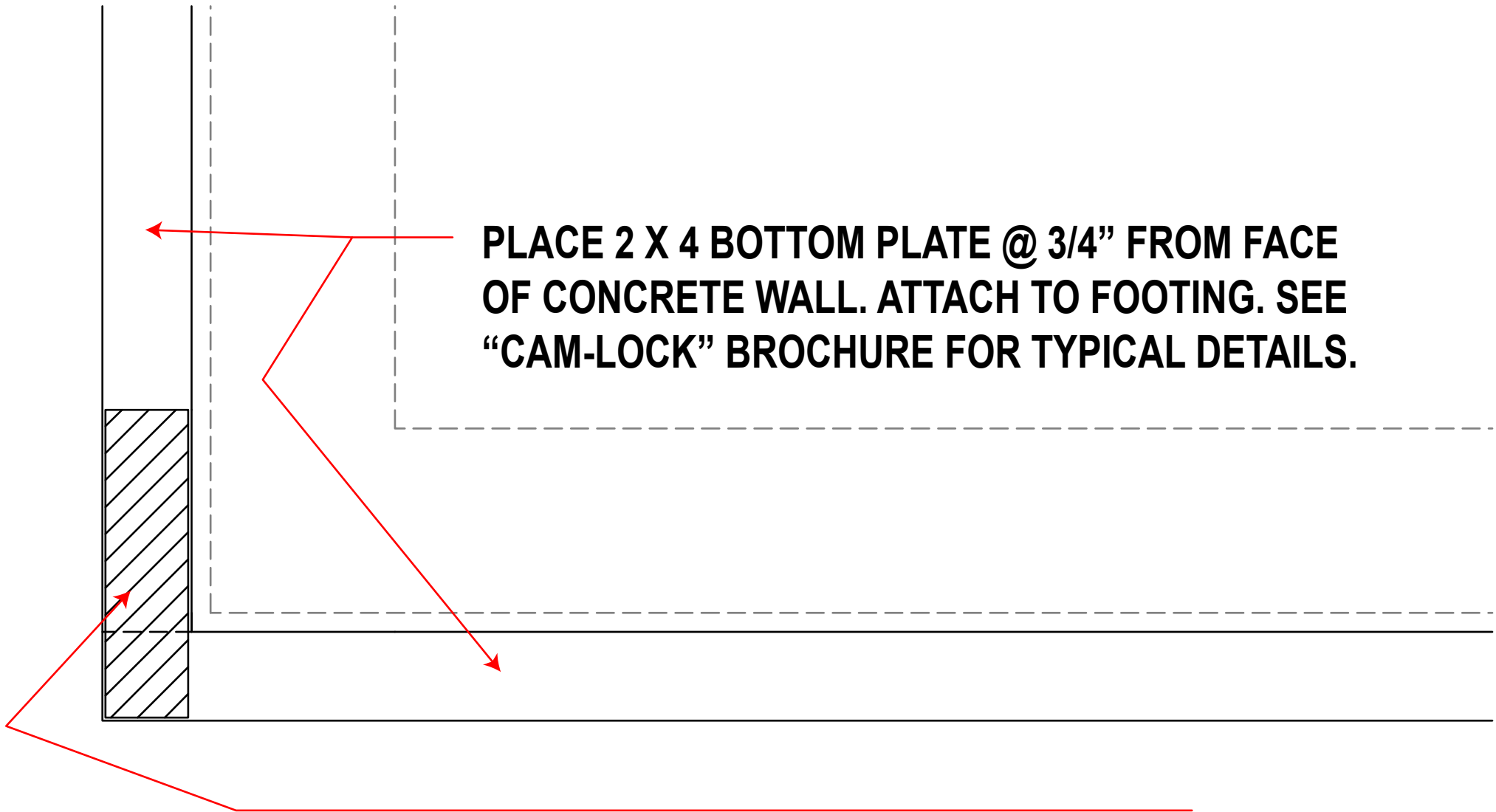
GATES STIFFBACK CAM
(SPECIFY 2 X 4 OR 2 X 6)





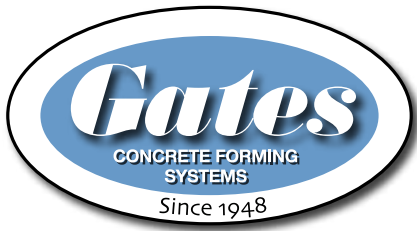
SETTING GATES CAM-LOCK HAND SET FORMS

STEP #1



PLACE 2 X 4 BOTTOM PLATE @ 3/4" FROM FACE OF CONCRETE WALL. ATTACH TO FOOTING. SEE "CAM-LOCK" BROCHURE FOR TYPICAL DETAILS.

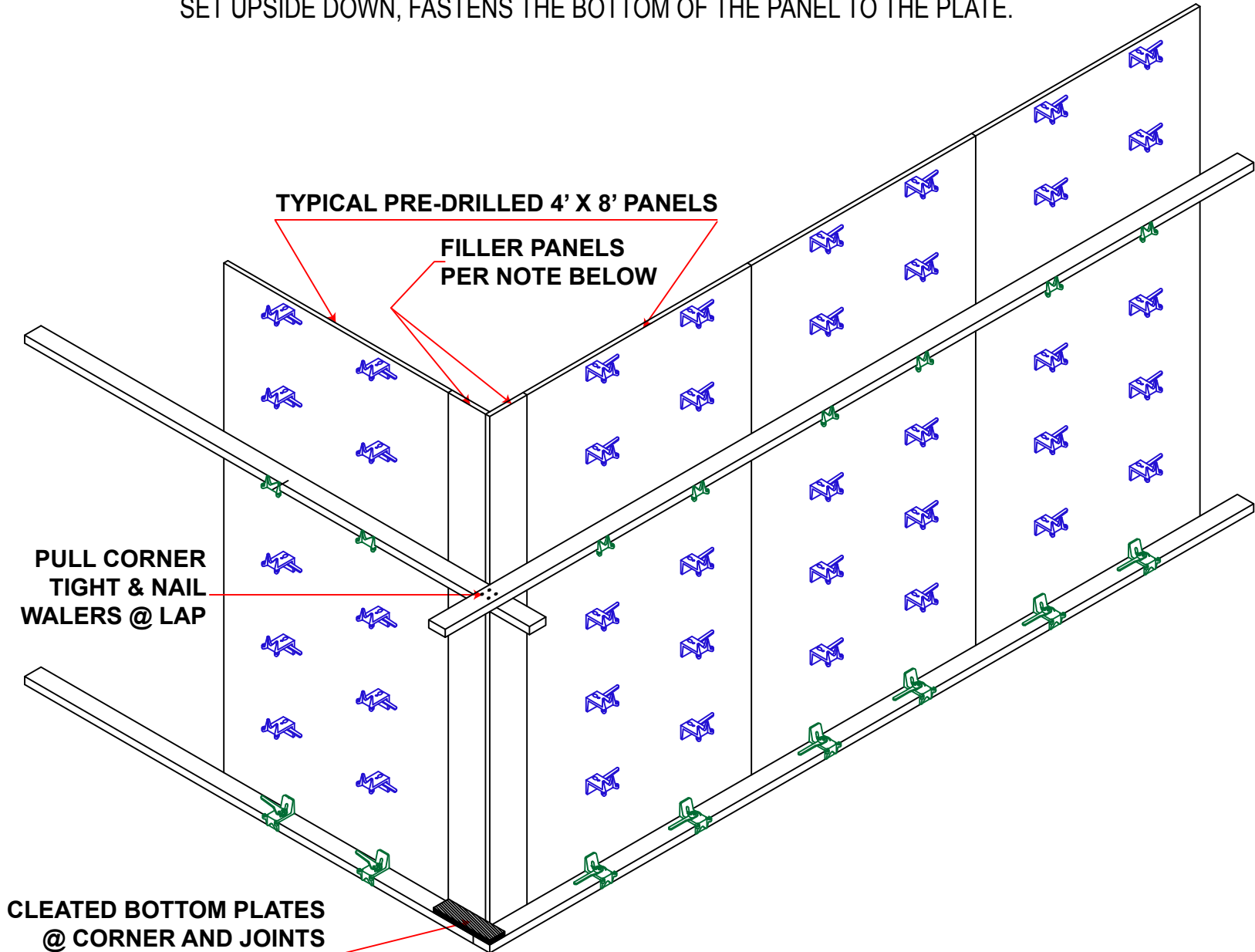
NAIL CLEAT @ CORNER OF 2 X 4 PLATES & @ JOINTS

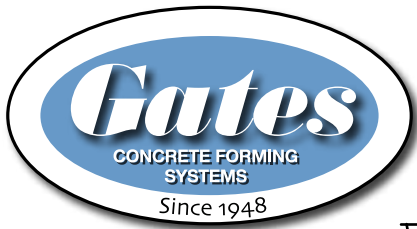


SETTING GATES CAM-LOCK HAND SET FORMS

START SETTING OUTSIDE PANELS FROM CORNER W/ FILLERS CUT TO WALL THICKNESS + 3/4". PRE-LOAD 4'x8' PANELS WITH CAM-LOCK BRACKETS AND GATES CAM-LOCK LOOP TIES BEFORE STANDING IN PLACE THEN SET 4'x8' PANELS IN PLACE. PLACE A 2x4 AT THE TIE ROW ABOUT SHOULDER HEIGHT. BOTTOM GATES CAM-LOCKS SET UPSIDE DOWN, FASTENS THE BOTTOM OF THE PANEL TO THE PLATE.

STEP #2

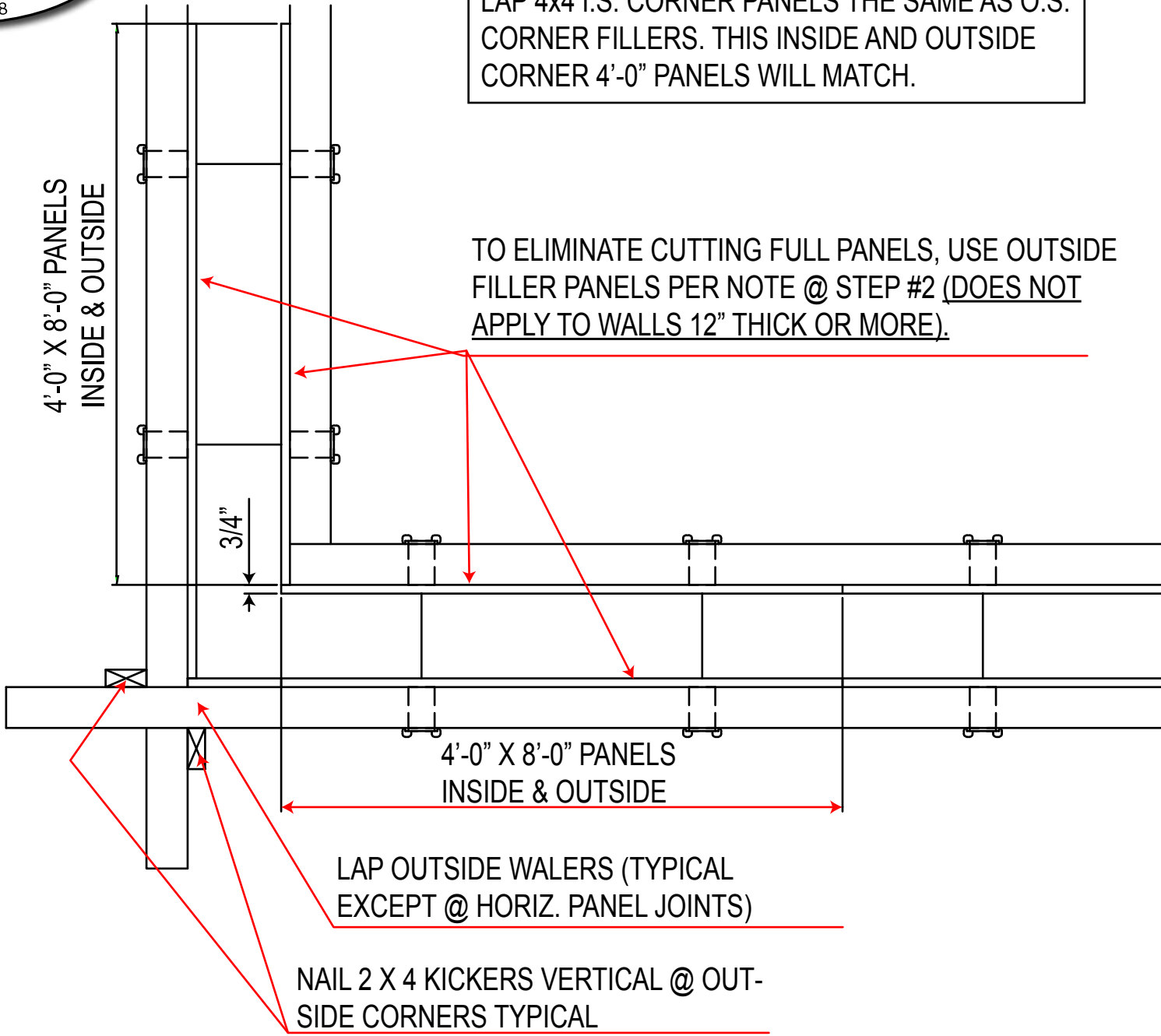


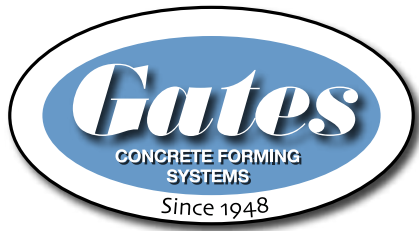


SETTING GATES CAM-LOCK HAND SET FORMS

STEP #3

LAP 4x4 I.S. CORNER PANELS THE SAME AS O.S. CORNER FILLERS. THIS INSIDE AND OUTSIDE CORNER 4'-0" PANELS WILL MATCH.

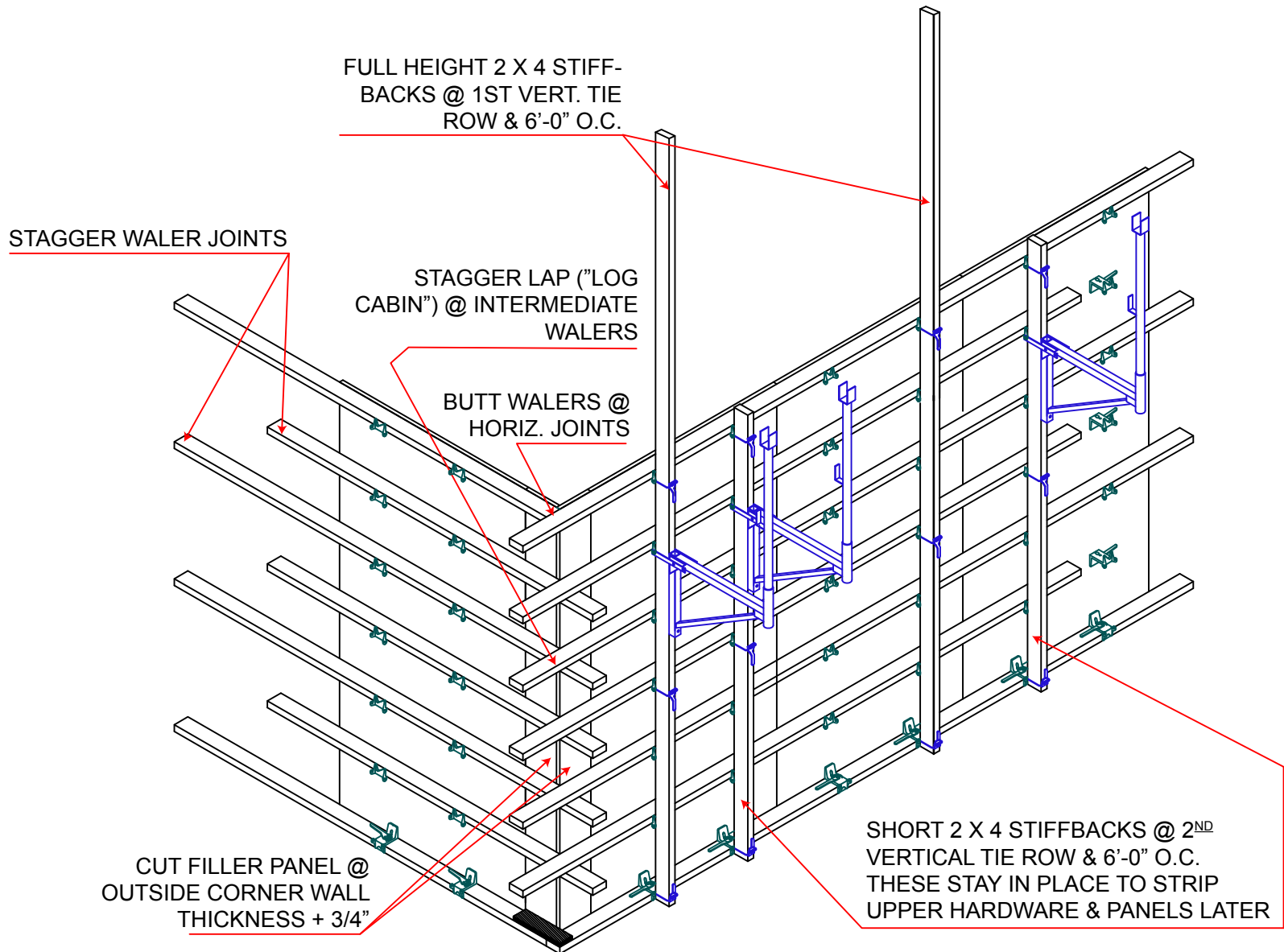


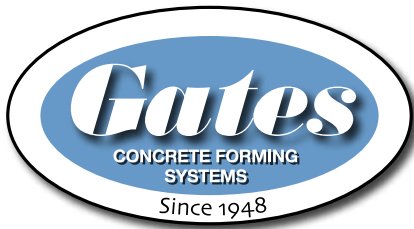


SETTING GATES CAM-LOCK HAND SET FORMS

PLACE BALANCE OF TIES & CAM-LOCK BRACKETS AS SHOWN. PLACE STAGGERED LENGTH 2 X 4 WALERS IN CAM-LOCK BRACKETS. FASTEN VERTICAL 2 X 4 STIFFBACKS AS SHOWN TO CAM-LOCK BRACKETS W/ GATES STIFFBACK CAMS AS SHOWN (6'-0" MAXIMUM O.C.) MAKE BREAK IN 2x4 WALER IN CENTER OF 4'-0" PANELS (NOT AT JOINT IN PLYWOOD)

STEP #4



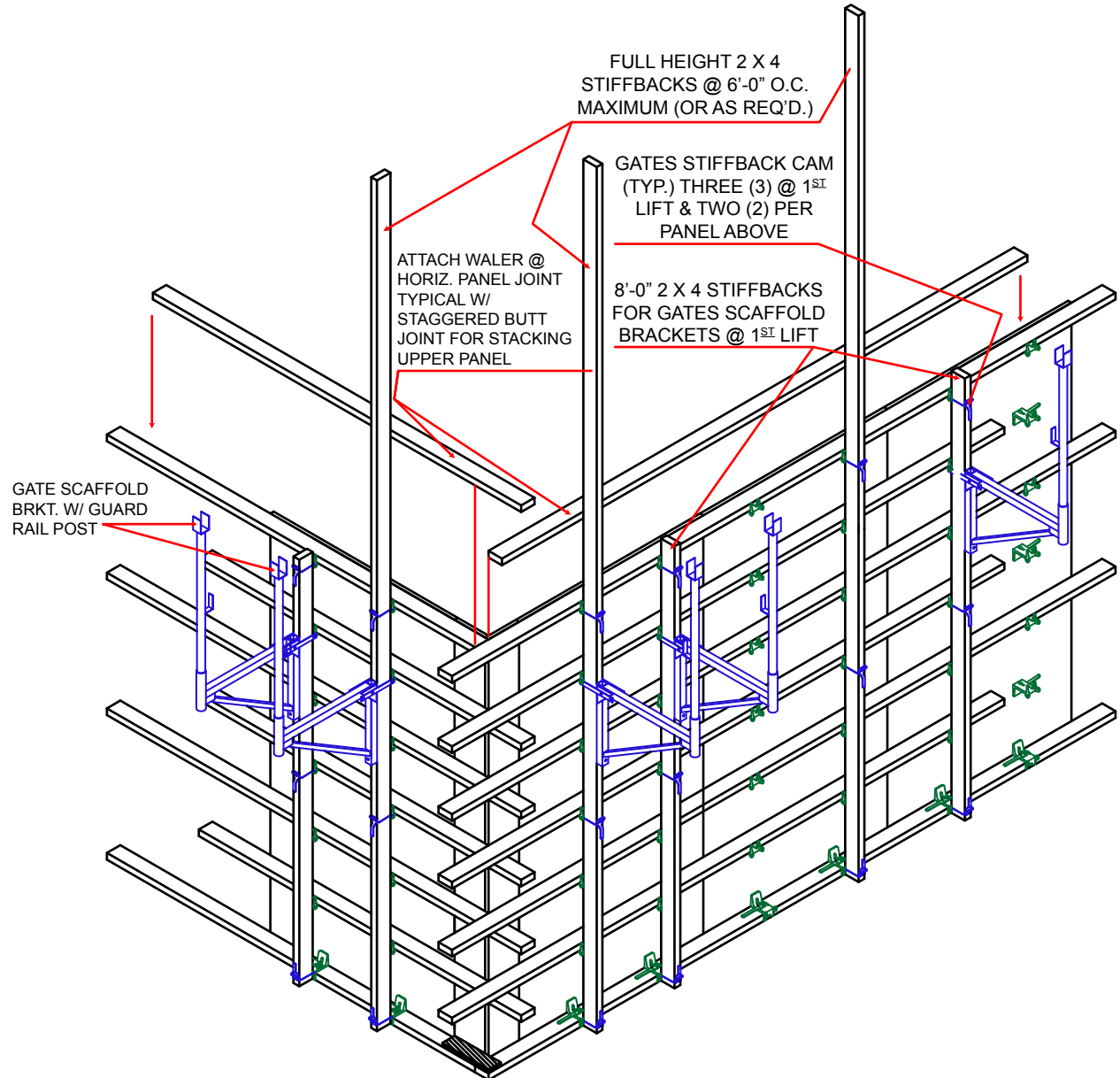
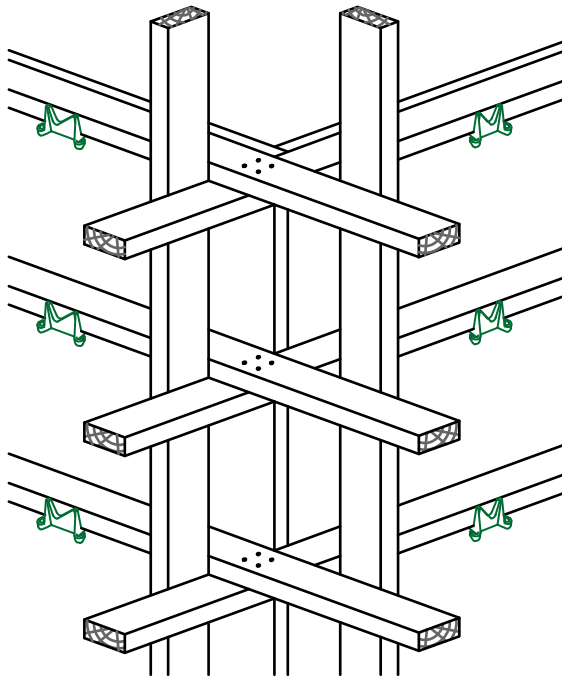


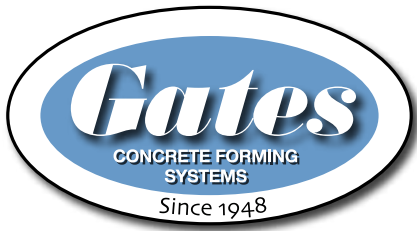
SETTING GATES CAM-LOCK HAND SET FORMS

BRACE VERT. STIFFBACKS TO STAKES OR "DEADMAN" WEIGHTS AS REQUIRED. ATTACH GATES SCAFFOLD BRACKETS TO 2ND CAM-LOCK DOWN FROM TOP OF LOWER PANELS. ADD 2X4 GUARD RAILS & TOE KICK, AND 2X PLANKING AS REQ'D. NAIL ADDED (DOUBLE) WALERS @ TOP OF TOP WALER TO MAKE DOUBLE WALER @ HORIZONTAL PANEL JOINT.

STEP #5

O.S. CORNER ON HIGH WALLS MAY BE LOCKED SECURELY BY RUNNING TWO VERTICAL 2x4's AS SHOWN. THESE VERTICAL 2x4's SHOULD BE SECURELY NAILED INTO THE HORIZONTAL 2x4's WITH DOUBLE HEAD NAILS.

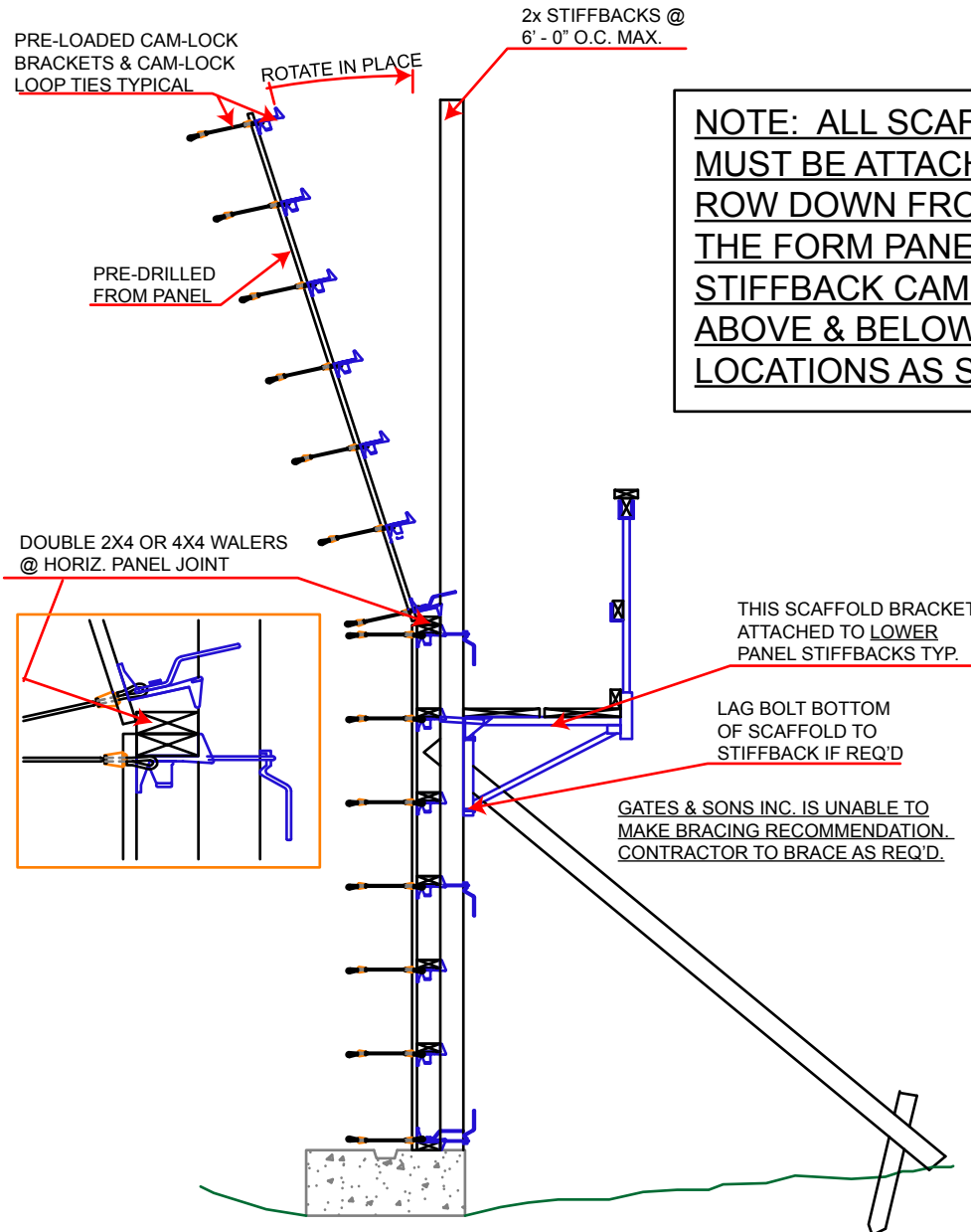




SETTING GATES CAM-LOCK HAND SET FORMS

PLACE PRE-LOADED PANELS ON TOP OF LOWER PANELS @ PLYWOOD JOINT. SET 2 - 2x12'S AS A WALKWAY & 3 - 2x4 GUARD RAILS, SEE BELOW. READ NOTE BELOW ABOUT GATES STIFFBACK CAMS, AND LOCATIONS REQUIRED.

STEP #6



NOTE: ALL SCAFFOLD BRACKETS MUST BE ATTACHED @ 2ND TIE ROW DOWN FROM THE TOP OF THE FORM PANELS. GATES STIFFBACK CAMS MUST BE SET ABOVE & BELOW THE SCAFFOLD LOCATIONS AS SHOWN.

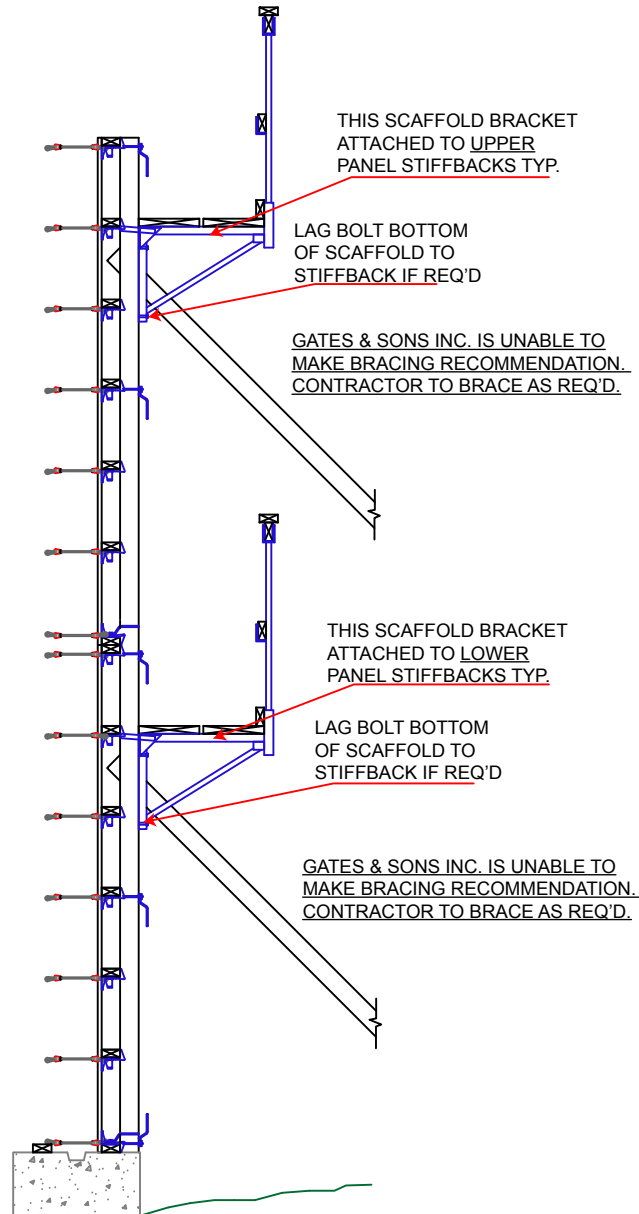


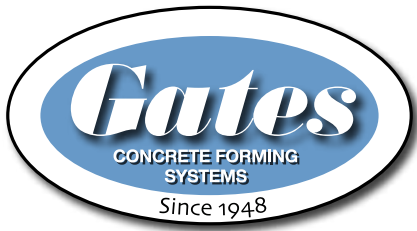
SETTING GATES CAM-LOCK HAND SET FORMS

BRACE, ALIGN AND PLUMB FORMS. ADD TOP ROW OF GATES SCAFFOLD BRACKETS USING 2 - 2x12'S AS A WALKWAY & 3 - 2x4 GUARD RAILS. READ NOTE BELOW ABOUT GATES STIFFBACK CAMS AND LOCATIONS REQUIRED. PLACE REBAR AND BLOCK-OUTS AS REQ'D.

STEP #7

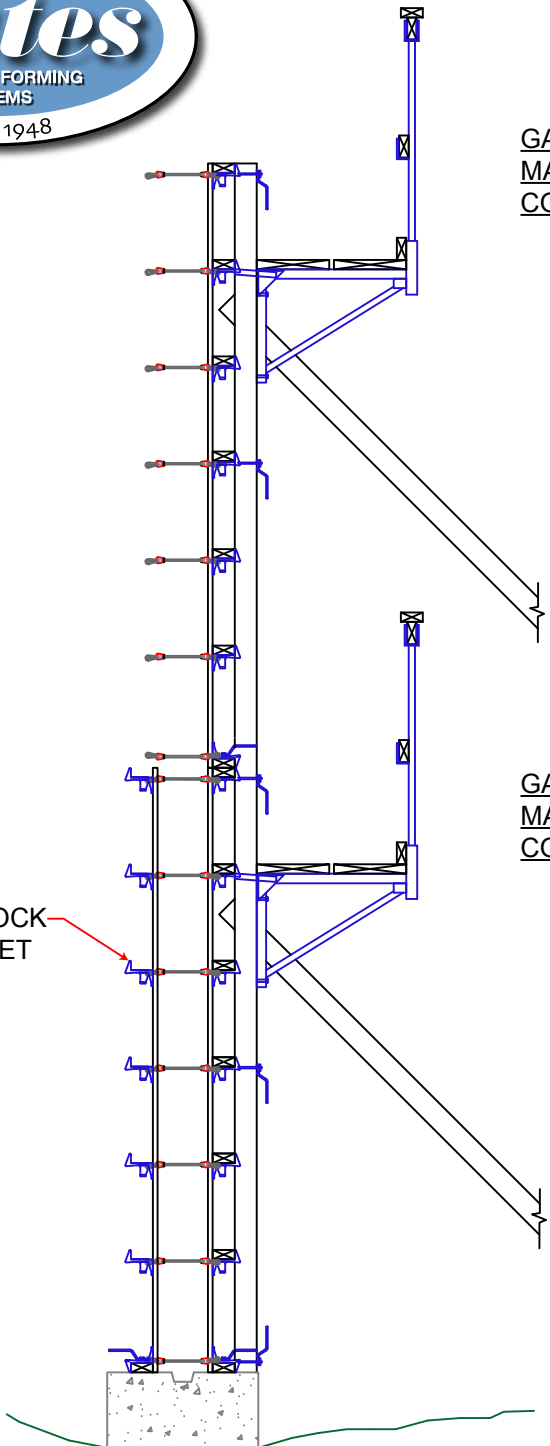
NOTE: ALL SCAFFOLD BRACKETS MUST BE ATTACHED @ 2ND TIE ROW DOWN FROM THE TOP OF THE FORM PANELS. GATES STIFFBACK CAMS MUST BE SET ABOVE & BELOW THE SCAFFOLD LOCATIONS AS SHOWN.





SETTING GATES CAM-LOCK HAND SET FORMS

STEP #8

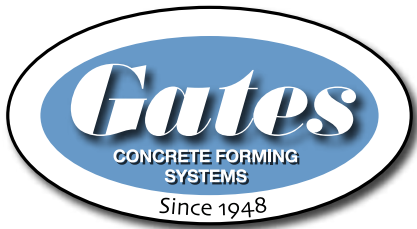


GATES & SONS, INC. IS UNABLE TO MAKE BRACING RECOMMENDATION. CONTRACTOR TO BRACE AS REQ'D.

GATES & SONS, INC. IS UNABLE TO MAKE BRACING RECOMMENDATION. CONTRACTOR TO BRACE AS REQ'D.

CAM-LOCK BRACKET

SET BOTTOM INSIDE PANELS ON "DOUBLE UP" SIDE OF WALL. SET BOTTOM WALER IN PLACE. ATTACH GATES CAM-LOCK BRACKETS TO TIES TO HOLD PANEL IN PLACE.



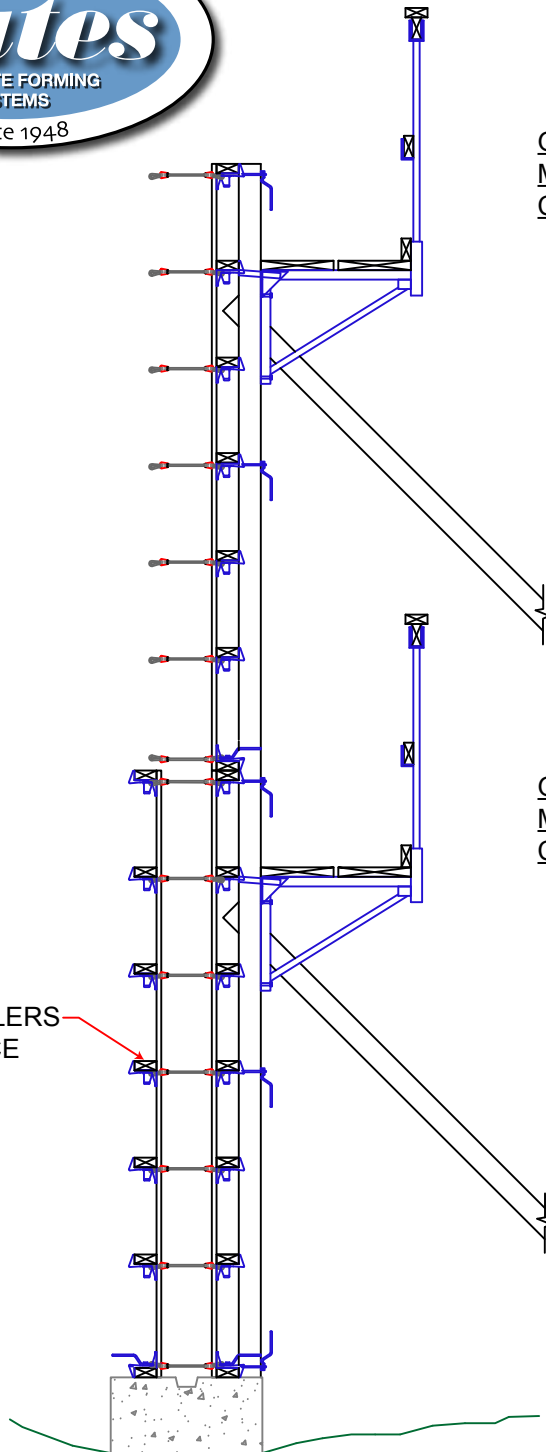
SETTING GATES CAM-LOCK HAND SET FORMS

STEP #9

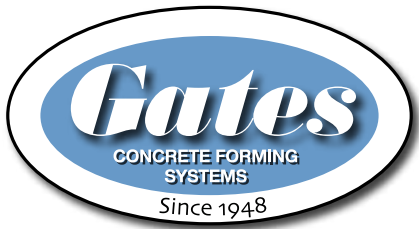
GATES & SONS, INC. IS UNABLE TO MAKE BRACING RECOMMENDATION. CONTRACTOR TO BRACE AS REQ'D.

GATES & SONS, INC. IS UNABLE TO MAKE BRACING RECOMMENDATION. CONTRACTOR TO BRACE AS REQ'D.

2x4 WALERS IN PLACE

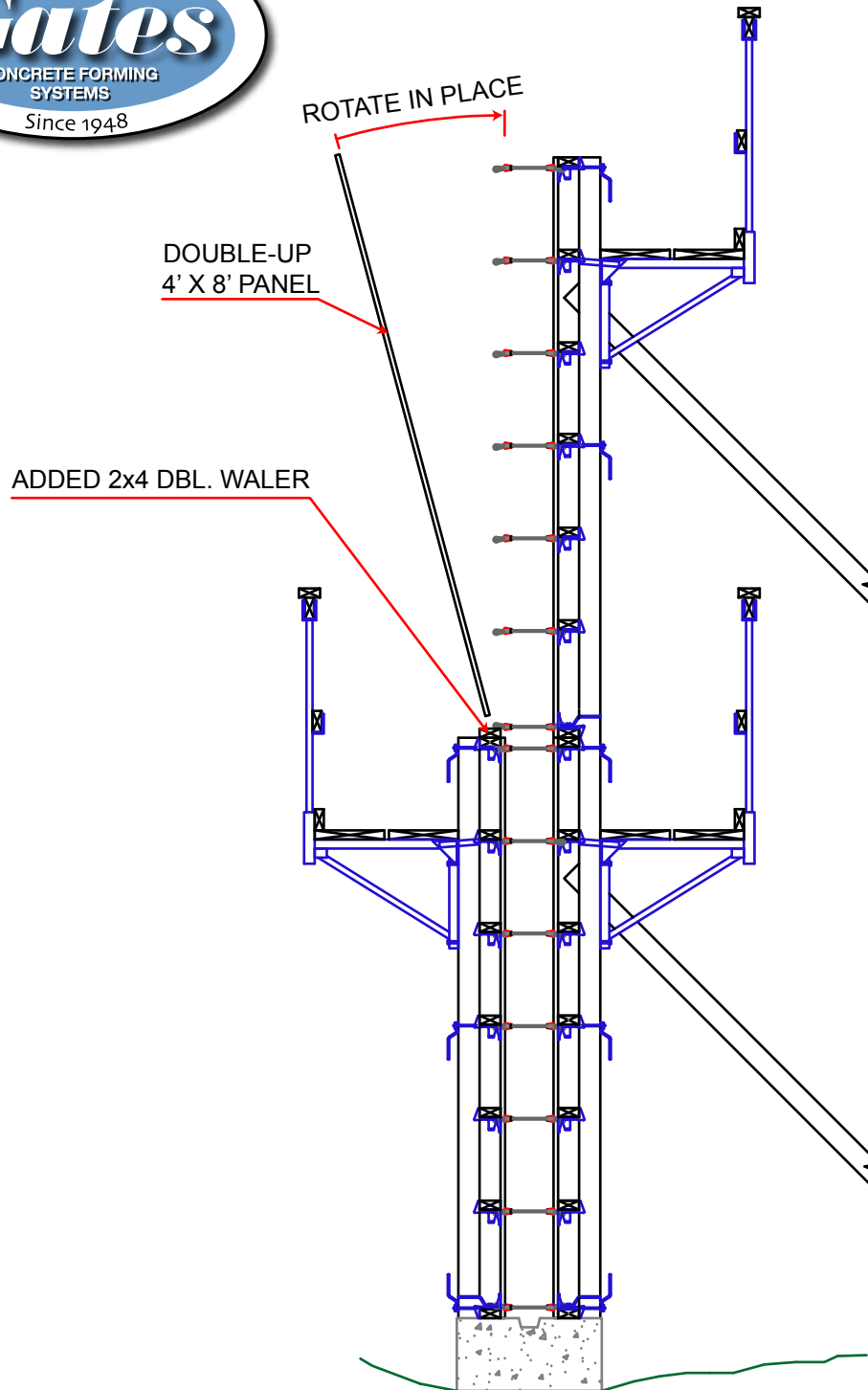


PLACE 2 X 4 WALERS ON "DOUBLE-UP" SIDE OF WALL AND TIGHTEN CAM-LOCK BRACKETS.



SETTING GATES CAM-LOCK HAND SET FORMS

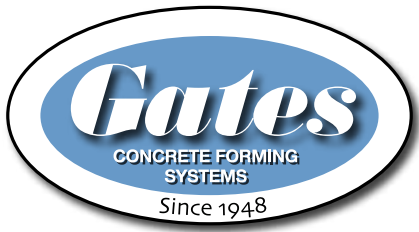
STEP #10



GATES & SONS, INC. IS UNABLE TO MAKE BRACING RECOMMENDATION. CONTRACTOR TO BRACE AS REQ'D.

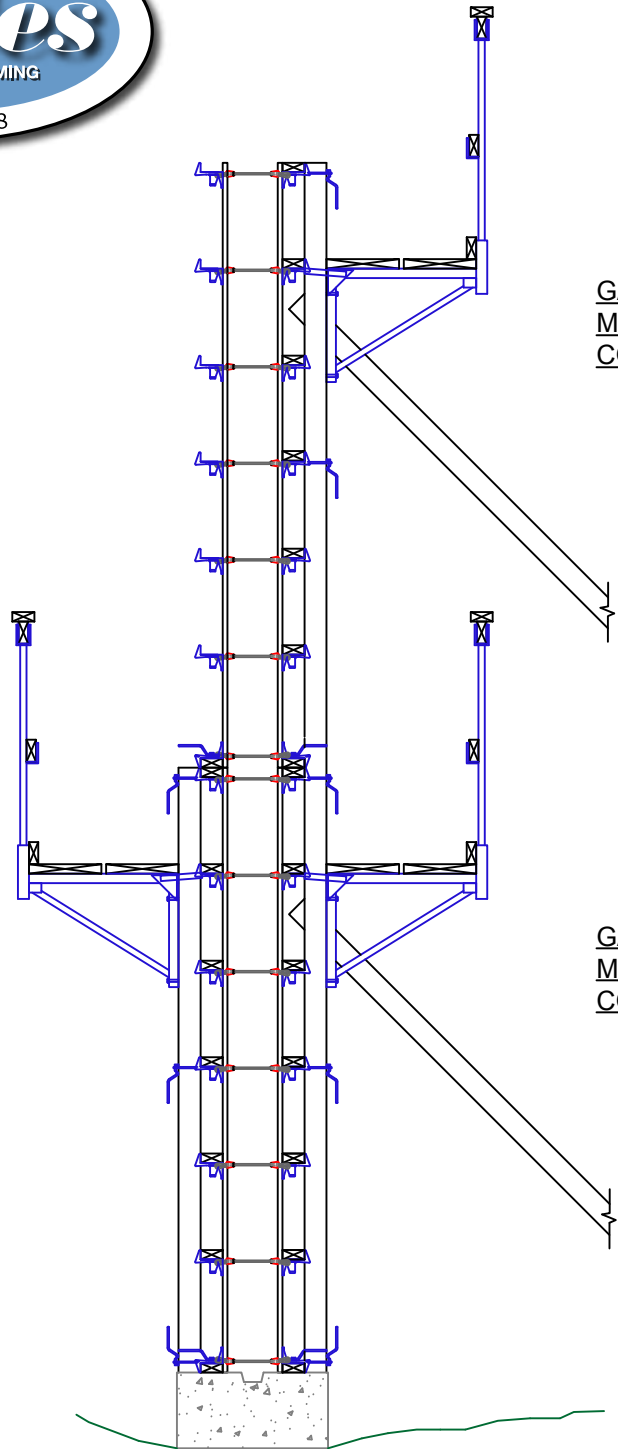
GATES & SONS, INC. IS UNABLE TO MAKE BRACING RECOMMENDATION. CONTRACTOR TO BRACE AS REQ'D.

PLACE 8' HIGH STIFFBACKS ON 2ND SIDE OF WALL @ 6'-0" O.C. MAXIMUM. ATTACH GATES SCAFFOLD BRACKETS AT 2ND CAM-LOCK DOWN AS SHOWN. ADD WALKWAYS AND GUARD RAILS AS NOTED @ STEP #6. NAIL ADDED 2 X 4 WALER IN PLACE ON TOP OF TOP WALER OF BOTTOM PANELS.



SETTING GATES CAM-LOCK HAND SET FORMS

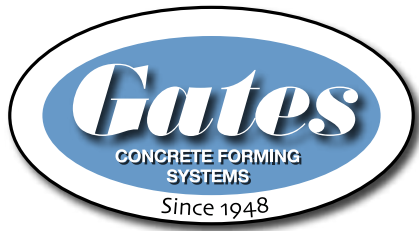
STEP #11



GATES & SONS, INC. IS UNABLE TO
MAKE BRACING RECOMMENDATION.
CONTRACTOR TO BRACE AS REQ'D.

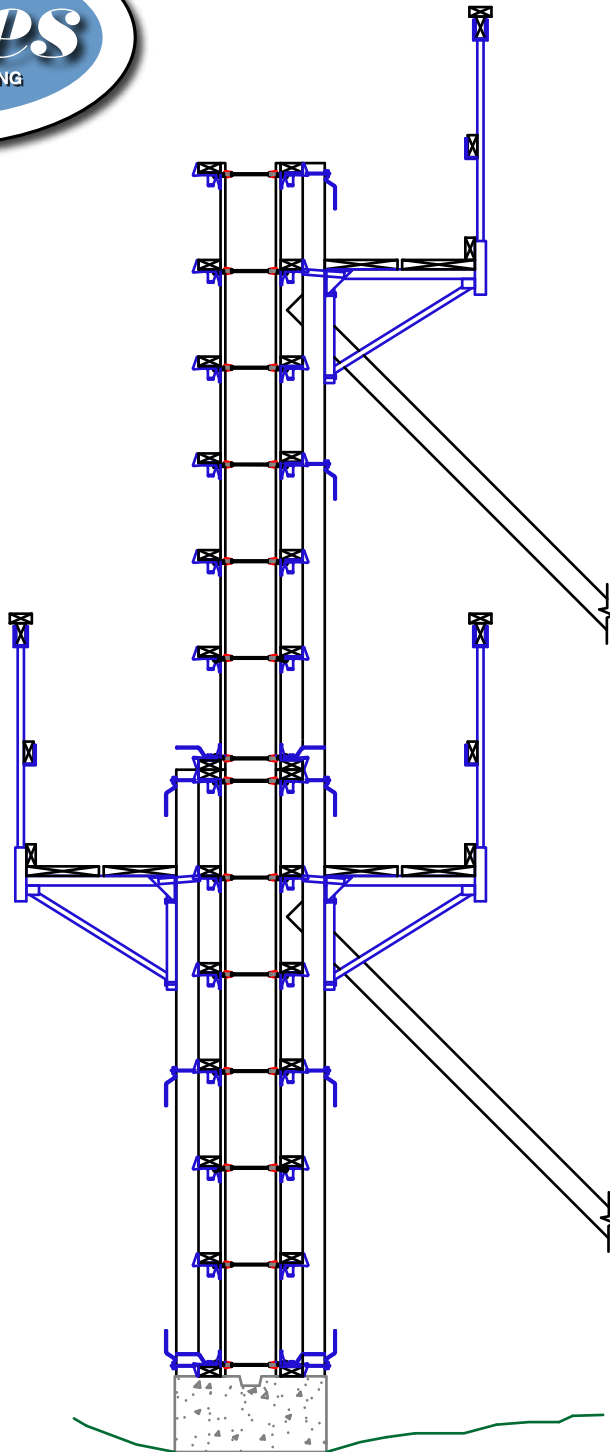
GATES & SONS, INC. IS UNABLE TO
MAKE BRACING RECOMMENDATION.
CONTRACTOR TO BRACE AS REQ'D.

SET TOP ROW OF PANELS IN PLACE AND
ATTACH GATES CAM-LOCK BRACKETS.



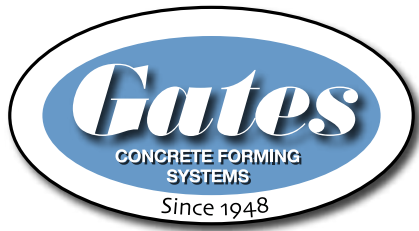
SETTING GATES CAM-LOCK HAND SET FORMS

STEP #12



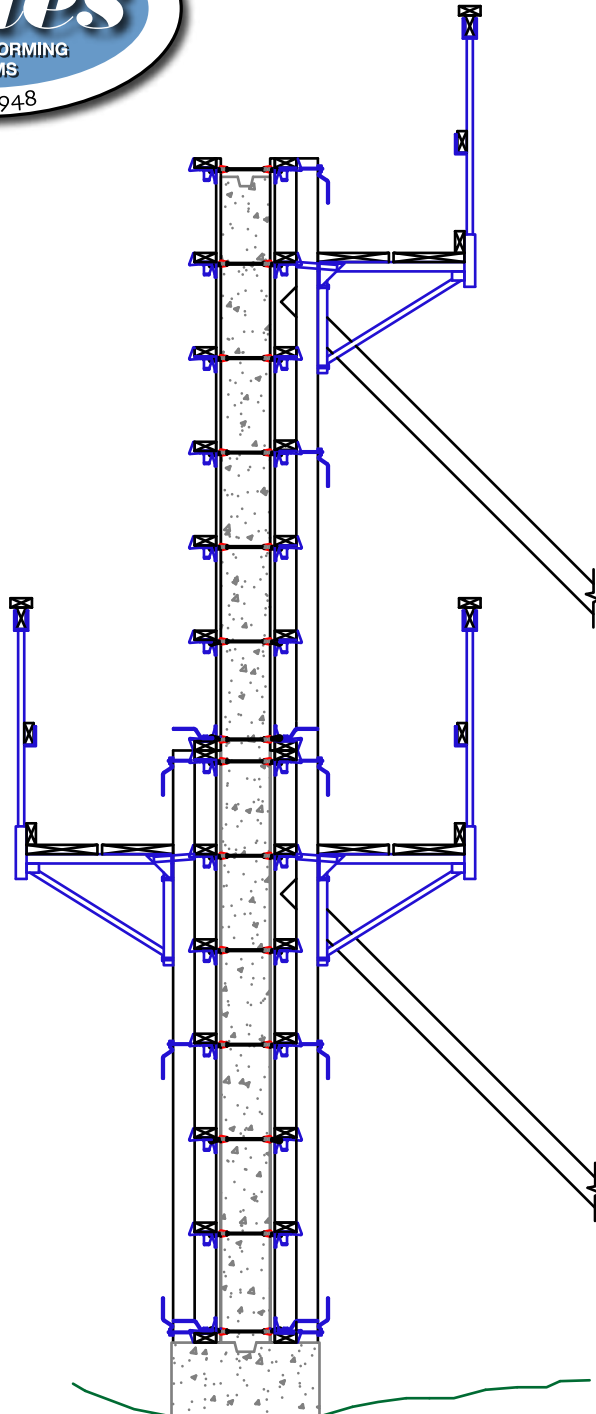
NOTE: ALL SCAFFOLD BRACKETS MUST BE ATTACHED @ 2ND TIE ROW DOWN FROM THE TOP OF THE FORM PANELS. GATES STIFFBACK CAMS MUST BE SET ABOVE & BELOW THE SCAFFOLD LOCATIONS AS SHOWN.

PLACE 2 X 4 WALERS IN GATES CAM-LOCK BRACKETS.
CHECK FORMS FOR PLUMB & ALIGNMENT.



SETTING GATES CAM-LOCK HAND SET FORMS

STEP #13



NOTE: ALL SCAFFOLD BRACKETS MUST BE ATTACHED @ 2ND TIE ROW DOWN FROM THE TOP OF THE FORM PANELS. GATES STIFFBACK CAMS MUST BE SET ABOVE & BELOW THE SCAFFOLD LOCATIONS AS SHOWN.

CHECK ALL GATES EQUIPMENT FOR THE PROPER ATTACHMENT AND CLOSURES. WHEN FORMS HAVE BEEN CHECKED FOR PLUMB & ALIGNMENT, AND BRACED AS JOB CONDITIONS REQUIRE, THEY ARE READY FOR THE CONCRETE PLACEMENT.