



Plastic Hole Forms for the Building Industries

Phone 1-800-747-5338

Fax 1-800-947-5338

[Applications](#)

[Sizes](#)

[Ordering](#)

[Contact](#)



[See Available Sizes](#)

Crete-Sleeve™ forms are available by the case. You can see the sizes [here](#).

[Contact Sales](#)

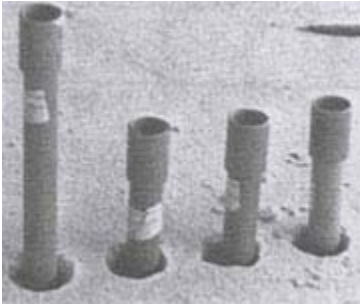
The Sales Department can be reached by [e-mail](#) or by calling (800) 747-5338

[Inquiry Form](#)

Looking for additional information about Crete-Sleeve™ and our products? Please complete this form.

[Place An Order](#)

Ready to place your order? Here is what we need.



Injection molded from sturdy linear polyethylene, Crete-Sleeve™ forms are less expensive, easier to work with and more durable than metal.



Crete-Sleeve™ forms outperform metal every time!

Crete-Sleeve™ forms save labor because they are easily removed after the forms have been stripped. They won't bend, chip, or dent, and they leave a smooth uniform hole every time.

Crete-Sleeve™ forms are available in several sizes and may be telescoped or cut for any slab thickness.

Crete-Sleeve™ forms serve other functions. Sealed with mastic, they make excellent water stops, or use them as insulators around glass pipe to prevent electrolysis around copper and brass pipe.

Crete-Sleeve™ forms are helping

- **Electricians**
- **Plumbers**

- **HVAC Providers**
- **Concrete Contractors**

save money and labor!



Outperforms Metal Every Time:

- **Low Cost - Saves Money**
- **No Assembly - Saves Labor**
- **Installs In Seconds**
- **Won't Dent Or Bend**
- **Removes Easily From Slab**
- **Smooth Round Hole Every Time**
- **Lightweight & Easy To Handle**
- **Safe To Use - No Sharp Edges**
- **Made With 100% Recyclable Material**
- **Proudly Made In The USA**

Phone

1-800-747-5338
(651) 454-3800

FAX

1-800-947-5338
(651) 454-8844

Mailing Address

P.O. Box 16372
St. Paul, MN 55116

Office Address

245 Marie Ave. E, Suite #500
West St. Paul, MN 55118

E-mail

E-mail Sales at
sales@cretesleeve.com

Online Form

Request info using
our [online form](#).