

DOUBLE POINTED WELD PINS

Spec. Sheet AWP-1

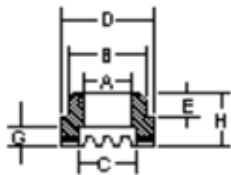
ARC TYPE



SPECIFICATIONS			
D		LENGTH	FERR.
10GA	.135	AS REQ'D	DP-10

MATERIAL MILD STEEL AND TYPE 302HQ STAINLESS STEEL

WASHERS SEE SPEC. SHEET SLW-1 FOR VARIOUS TYPES
 OF STEEL AND STAINLESS STEEL WASHERS.



ALL ORDERS INCLUDE FERRULES

NO	A	B	C	D	E	G	H
DP-10	.154	.281	.190	.375	.156	.065	.390

F.O.B. - Brockton, MA

AGM Industries, Inc.
16 Jonathan Drive, Brockton, MA 02301
Tel:(508) 587-3900 **Fax:**(508) 587-3283 **Toll Free:** 800-225-9990

Spec. Sheet CHP-1

WELD PINS
CUPPED HEAD

CUPPED HEAD & MINI-CUP WELD PINS



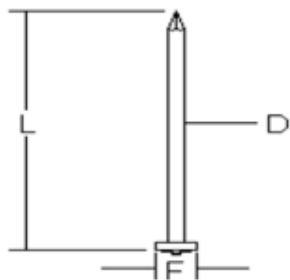
PART NO.	D	C	LENGTH
CH-12	.106	1-1/2"	AS REQUIRED
CH-10	.135	1-1/2"	AS REQUIRED
MC-14	.080	1-3/16"	UP TO 2-1/8"
MC-12	.106	1-3/16"	AS REQUIRED

MATERIAL GALVANIZED STEEL
 STAINLESS STEEL AVAILABLE ON SPECIAL ORDERS.

PINS ALSO AVAILABLE INSULATED FOR WELDING THROUGH FOIL-FACED MATERIALS.
F.O.B. - Brockton, MA

AGM Industries, Inc.
16 Jonathan Drive, Brockton, MA 02301
Tel:(508) 587-3900 **Fax:**(508) 587-3283 **Toll Free:** 800-225-9990

WELD PINS
CAPACITOR DISCHARGE



STANDARD INSULATION PINS

SPECIFICATIONS

D	F	LENGTH
12 GA .106	.187	AS REQ'D
10 GA .135	.218	AS REQ'D

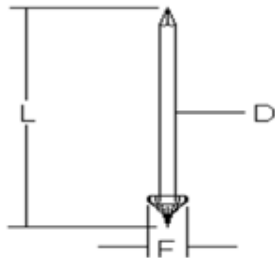
- MATERIAL MILD STEEL AND TYPE 302HQ STAINLESS STEEL AND ALUMINUM
- PLATING MILD STEEL PINS ARE COPPER PLATED
- WASHERS SEE SPEC SHEET SLW-1 FOR VARIOUS TYPES OF STEEL, STAINLESS STEEL, AND ALUMINUM SELF-LOCKING WASHERS.

Nail point is standard; available with “blunt end” as special order.

F.O.B. - Brockton, MA

AGM Industries, Inc.
16 Jonathan Drive, Brockton, MA 02301
Tel:(508) 587-3900 **Fax:**(508) 587-3283 **Toll Free:** 800-225-9990

POWERBASE® WELD PINS



POWERBASE® INSULATION PINS
SPECIFICATIONS

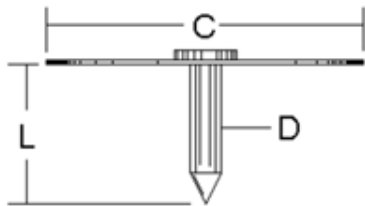
D	F	LENGTH
12 GA .106	.165	AS REQ'D
10 GA .135	.188	AS REQ'D

- MATERIAL MILD STEEL AND TYPE 302HQ STAINLESS STEEL
- WASHERS SEE SPEC. SHEET SLW-1 FOR VARIOUS TYPES OF STEEL AND STAINLESS STEEL SELF-LOCKING WASHERS.
- NOTE WE DO NOT RECOMMEND THE USE OF POWERBASE® WELD PINS ON METALS LESS THAN 1/16" THICK.

F.O.B. - Brockton, MA

AGM Industries, Inc.
16 Jonathan Drive, Brockton, MA 02301
Tel:(508) 587-3900 **Fax:**(508) 587-3283 **Toll Free:** 800-225-9990

DYNAPOINT® WELD PINS
RESISTANCE TYPE CUPPED WELD PINS



SPECIFICATIONS		
D	C	L
.135	1"	1/2" MIN

PART NO.	PACK	WGT/M	RECOMMENDED USE
RP-9-0500-1	1M	6.5	For 1/2" Duct Liner
RP-9-0500-5	5M	6.5	For 1/2" Duct Liner
RP-9-0750-1	1M	7.6	For 1" Duct Liner
RP-9-0750-5	5M	7.6	For 1" Duct Liner
RP-9-1000-1	1M	8.6	For 1" High Density Duct Liner
RP-9-1000-5	5M	8.6	For 1" High Density Duct Liner

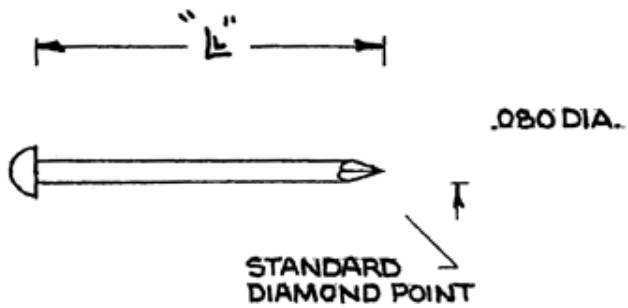
	SPINDLE	WASHER
Material Specification	Mild Steel	Mild Steel
Plating	Zinc/Galvanized	Zinc/Galvanized

Longer Lengths are available upon request.

F.O.B. - Brockton, MA

AGM Industries, Inc.
16 Jonathan Drive, Brockton, MA 02301
Tel:(508) 587-3900 **Fax:**(508) 587-3283 **Toll Free:** 800-225-9990

Resistance Pins



Available in:

Standard Lengths: up to 2 1/2"

Mild Steel

14 gauge diameter spindle

[Self-locking Washers](#) available in a variety of sizes and configurations.

AGM Industries, Inc.

16 Jonathan Drive, Brockton, MA 02301

Tel:(508) 587-3900 **Fax:**(508) 587-3283 **Toll Free:** 800-225-9990