

WILKINSON CHUTES CANADA



Recycling Systems For

- **Single Chute
2 & 3 Sort Models**
- **3 Compartment
Multichute®**

Chute Systems For

- **Linen**
- **Rubbish**

Compactors For

- **Industry**
- **Apartments**

Bins and Recycling Totes For

- **Industry**
- **Apartments**



WE RECYCLE!



WILKINSON CHUTES

CHUTE EQUIPMENT for

- Linen
- Rubbish
- Recycling

PRODUCTS

Three Models for Recycling

Single Chute 3-Sort Model,	
Single Chute 2-Sort Model,	
3 Compartment MULTICHUTE®	3

Recycling System

Single Chute – Three-Sort Model	4
---------------------------------	---

Single Chute Recycling System

Three-Option Discharge Unit	
Three-Option Discharge Unit	5

Recycling Units

Electric Interlock Door Detail	6
--------------------------------	---

Recycling Units

Master Control Panel	7
----------------------	---

MULTICHUTE® Recycling System

Three-Compartment Chute	8
Charging Room Layout Options	9

CHUTE Components

Intake Doors	10
Discharge Unit	11
Disinfectant and Sanitizing Unit	11

CHUTE Risers for Linen and Rubbish	12
------------------------------------	----

Specifications for

Standard Linen Chute for Loose Laundry	
Standard Linen Chute for Laundry Bags	
Standard Rubbish Chute – 610mm	13

Compactors for Apartment Applications	14
--	----

Compactor Containers	15
----------------------	----



Wilkinson Chutes Canada incorporates many years of design and development improvements and the finest equipment available for the collection of soiled linen, rubbish, dust or any material that can withstand dropping from upper floors to collection areas. Exact engineering and design combined with skilled tradespeople to manufacture a product second to none. Wilkinson Chutes Canada chutes are installed in multiple recycle projects. Chute equipment is fully assembled at the factory, for erecting. All vertical seams are welded, risers are completely fabricated, horizontal seams are tapered or slip jointed (raw crimping is prohibited for horizontal connections in the riser), all doors are attached to the chute throats and each chute is delivered to the job site with a maximum of two sections per story based on standard height.

TWO MODELS FOR RECYCLING

Single Chute 3-Sort Model and 3 Compartment MULTICHUTE®

Wilkinson Chutes Canada manufactures 3 models for recycling trash in high rise buildings.
Two systems are suitable for sorting 3 separate groups of waste:

PAPER / CARDBOARD

BOTTLES / CANS

RUBBISH

The Two-Sort Model is suitable for sorting 2 separate groups of waste:

RECYCLABLE MATERIALS

RUBBISH

The MULTICHUTE® system consists of 3 separate chutes, accessible through a single door, the second system has a single chute with a discharge unit that can be directed to one of three separate and distinct containers, to satisfy both, corner and end feed site conditions.



ADVANTAGES of the Recycling systems:

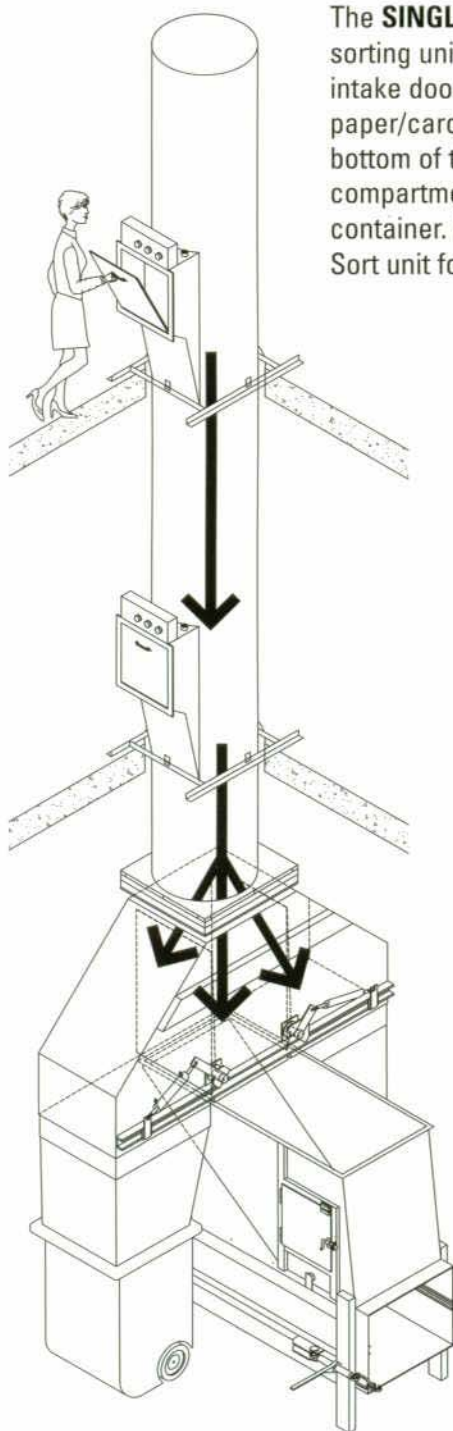
- Recycling Units take up reduced floor space
- No floor space is required for recyclables on each floor
- Residents can dispose of waste and recycle from a single source on each floor
- Labor is less – superintendents don't need to pick up and transport recyclables from each floor
- Cost of disposal is reduced – since volume of trash is reduced by recycling.
- Both recycling systems are easy to use
- 4 configurations can be satisfied: STRAIGHT POSITION, CORNER POSITION, END POSITION and Two-Sort Model

WILKINSON CHUTES

RECYCLING SYSTEM

Single Chute - Three-Sort Model

The **SINGLE CHUTE THREE-SORT MODEL** consists of one vertical chute, with an automatic sorting unit at the bottom of the chute where the waste is discharged. Each floor has one intake door, equipped with option buttons that can be set for one of three categories: paper/cardboard, glass/cans and rubbish. The default position is set for rubbish. At the bottom of the chute an automatic sorting unit discharges waste into one of three separate compartments. Hydraulically supplied cylinders move sorting flaps into the selected container. Wilkinson Chutes Canada designs and manufactures the Single Chute, Three-Sort unit for each specific application, considering room size and height conditions.



SINGLE CHUTE Three-Sort Model

Physical Properties

Capacity

Compactor bins suit 1.8 metre and 2.7 metre capacity.

Bin Totes capacity ranges from 431 Litres Gallons to 1363 Litres.

Unit Configurations

Straight drop
Corner Position
End Position

Height Requirement

Discharge Room Minimum Height required is 2591mm (102").

Structure

The system is manufactured with 14 gauge steel.
All seams are fully welded.
Mounted on own support frame.

Power Supply

To suit customer need.

Components

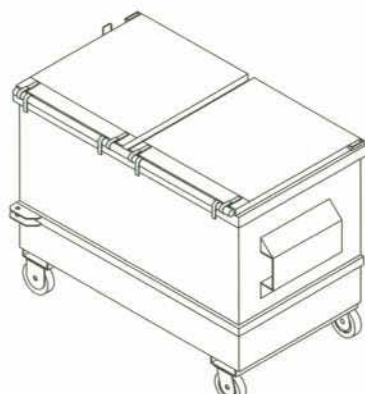
Chute
Discharge Unit
Hydraulic Tank with 31 Litre capacity.
Sorting Flaps, operated by Hydraulic Cylinders.
Intake Door with Control Panel:
Controls operated by a PLC Program Software.

Noise Reduction

16mm belting mounted on sorting flaps of discharge unit

Safety Features

Doors are ULC listed, electrically operated, one door operation at a time.
Discharge room: manual lock-out when replacing bins
Bottom of sorting unit is equipped with rubber skirts for safety
Electronic Interlock Doors: ULC Rated



NEW FEATURE

When the Rubbish indicator light is "in use" additional residents on other floors may dispose of Rubbish. This feature will work on rubbish only

RECYCLING SYSTEM

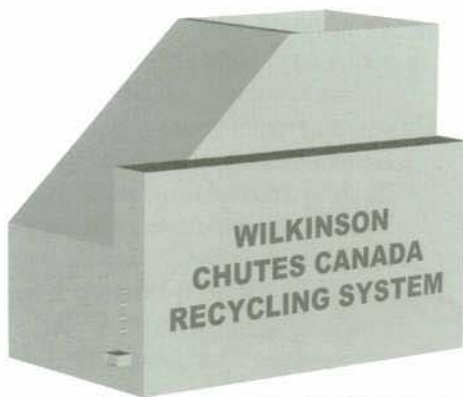
Single Chute -Three-Sort and Two-Sort Models

DISCHARGE UNITS – 4 positions available

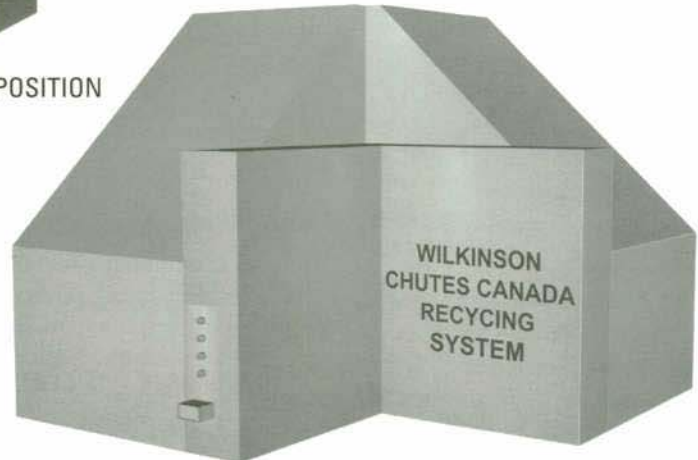
Located at the bottom of the chute, an automatic sorting unit discharges waste into one of four separate compartments. Hydraulically supplied cylinders move sorting flaps into the selected container. Wilkinson Chutes Canada designs and manufactures the Single Chute Three-Sort unit or the Single Two-Sort unit for each specific application, considering room size and height conditions.



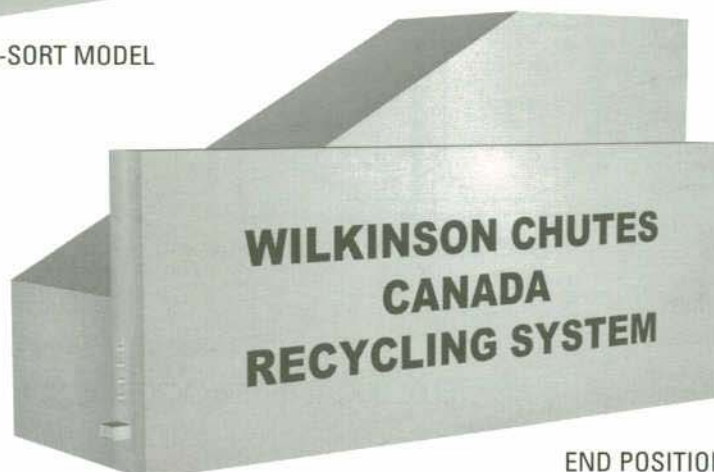
STRAIGHT POSITION



TWO-SORT MODEL



CORNER POSITION

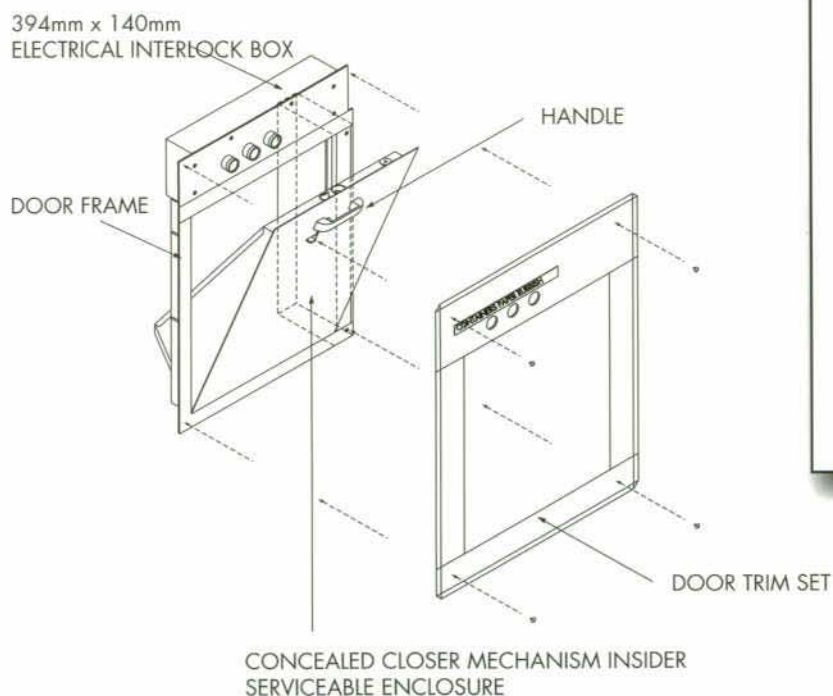


END POSITION

WILKINSON CHUTES

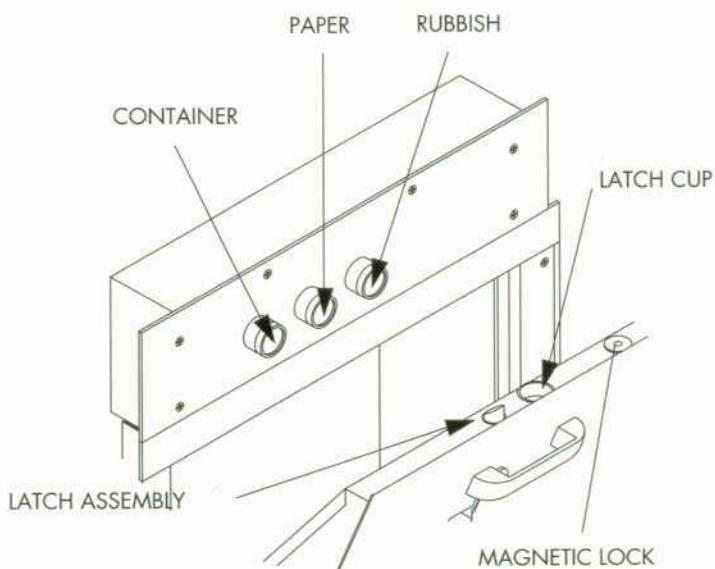
RECYCLING UNITS

Electrical Interlock Door Details



Electrically Interlocked

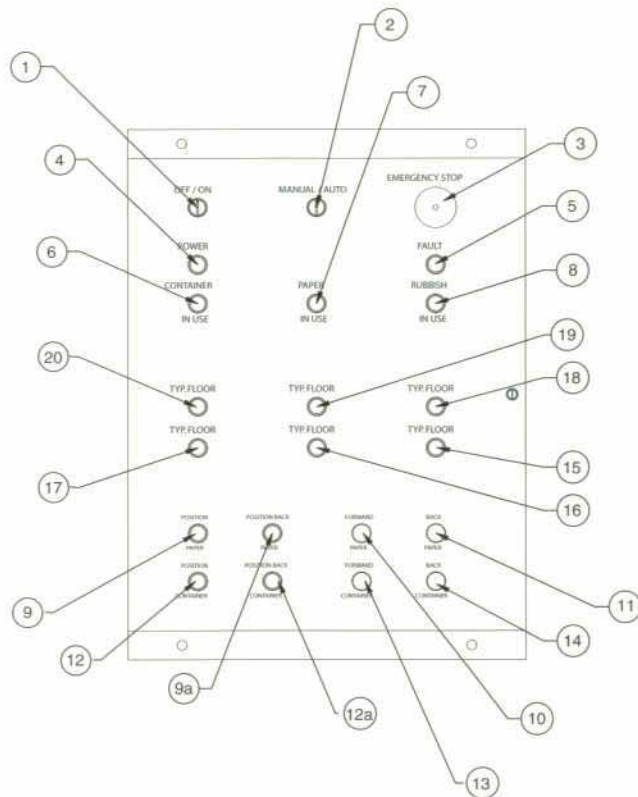
"W" Type Intake Doors can be interlocked electrical, so only one door can be opened at any one time to minimize air movement between floors. Each intake has an "Indicator" light showing when the door is locked, so that personnel will then know the door cannot be opened. (Supplied only when specified)



ELECTRICAL INTERLOCK BOX DETAIL

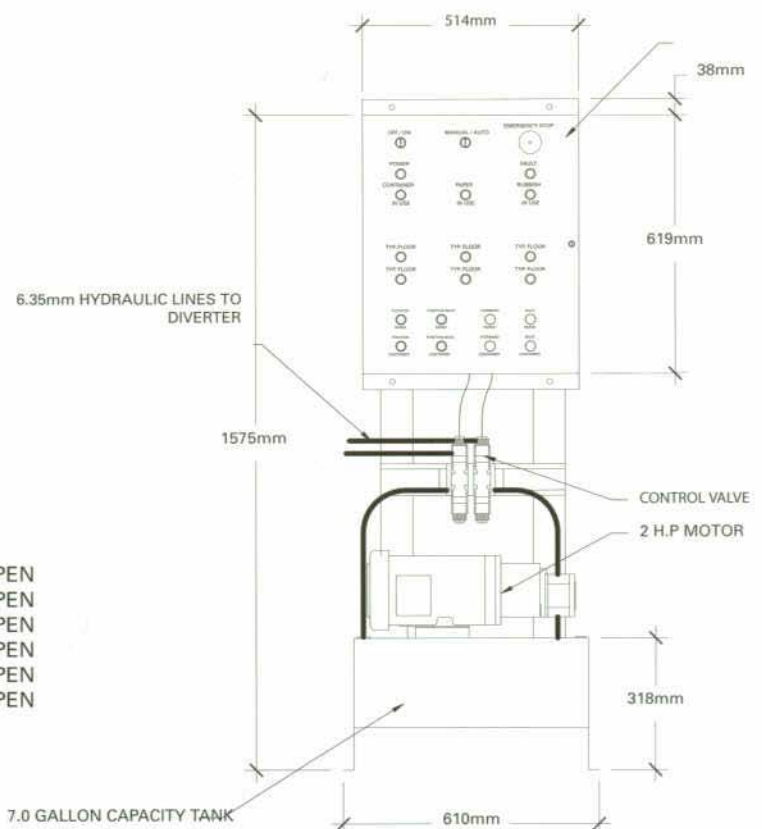
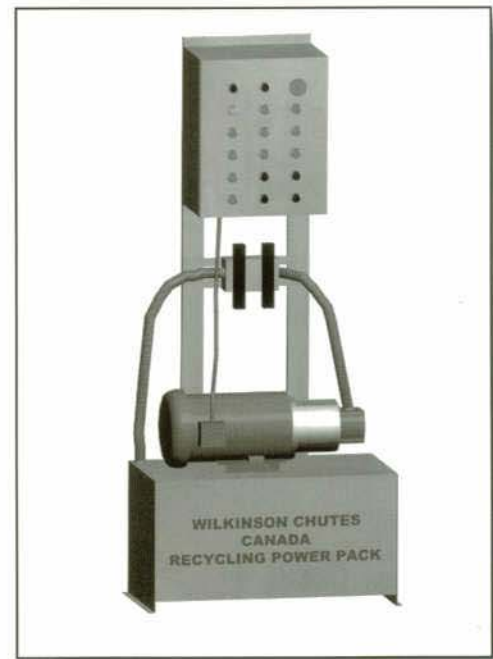
RECYCLING UNITS

Master Control Panel



1. OFF / ON
2. MANUAL / AUTO
3. EMERGENCY STOP
4. POWER
5. FAULT
6. CONTAINER IN-USE
7. PAPER IN-USE
8. RUBBISH IN-USE
9. POSITION PAPER
- 9A. PAPER BACK
10. FORWARD PAPER
11. BACK PAPER
12. POSITION CONTAINER
- 12A. CONTAINER PAPER
13. FORWARD CONTAINER
14. BACK CONTAINER

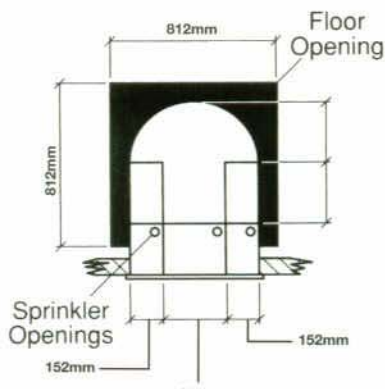
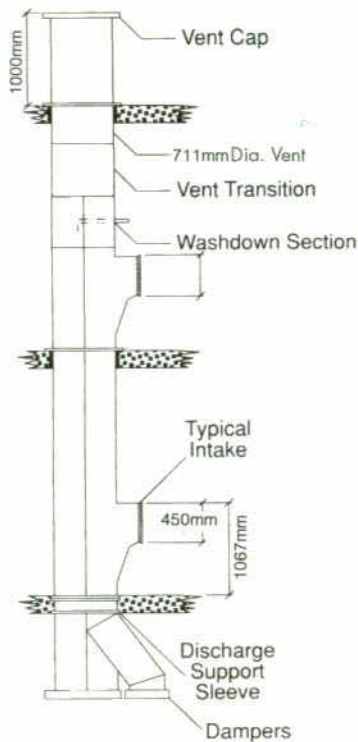
15. TYPICAL FLOOR DOOR OPEN
16. TYPICAL FLOOR DOOR OPEN
17. TYPICAL FLOOR DOOR OPEN
18. TYPICAL FLOOR DOOR OPEN
19. TYPICAL FLOOR DOOR OPEN
20. TYPICAL FLOOR DOOR OPEN



WILKINSON CHUTES

MULTICHUTE® RECYCLING SYSTEM

3 Compartment Chute



MULTICHUTE® Unit

MULTICHUTE® is an efficient, space saving alternative to multiple standard chutes, for new buildings as well as an upgrade to existing structures. MULTICHUTE® consists of 3 separate chutes in one housing, and offers an economical design option, and a high quality product.

MULTICHUTE® is manufactured to high quality standard with high quality materials.

Wilkinson Chutes Canada designs and manufactures the MULTICHUTE® unit for each specific application, considering site conditions.

MULTICHUTE® Model

Physical Properties

Capacity

Compactor bins suit 1.5 cu/m and 1.5 cu/m capacity.
Bin Totes capacity ranges from 431 Litres to 1363 Litres.

Height Requirement

Minimum Height required is 2591mm (102").

Chute Structure

Housing is fabricated of 16 gauge aluminized / satincoat steel.

All seams are fully welded.

Mounted on floor structure.

Components

CHUTE, INTAKE DOORS, FIRE DAMPER at DISCHARGE

Safety Features

Doors are ULC listed.

APPLICATIONS

Residential

Multichute can facilitate the separation of materials for the purpose of recycling.

Institutional

Multichute may be used to separate laundry by type or contamination. As a rubbish chute it can assist in the segregation of wastes.

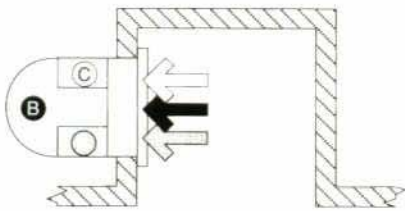
Commercial

As a garbage chute, Multichute can be introduced to separate paper waste generated in everyday administrative operations for future recycling.

Industrial

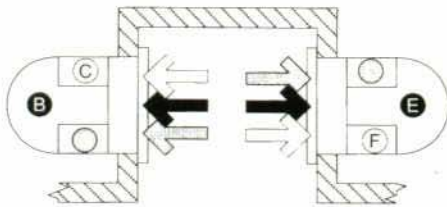
May be used to segregate manufacturing wastes for recycling and specialized disposal requirements.

CHARGING ROOM LAYOUT OPTIONS



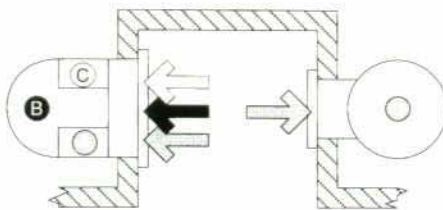
Single Multichute

This layout would allow three segregations, ie: paper (A); non-recyclables (B); and other recyclables (C).



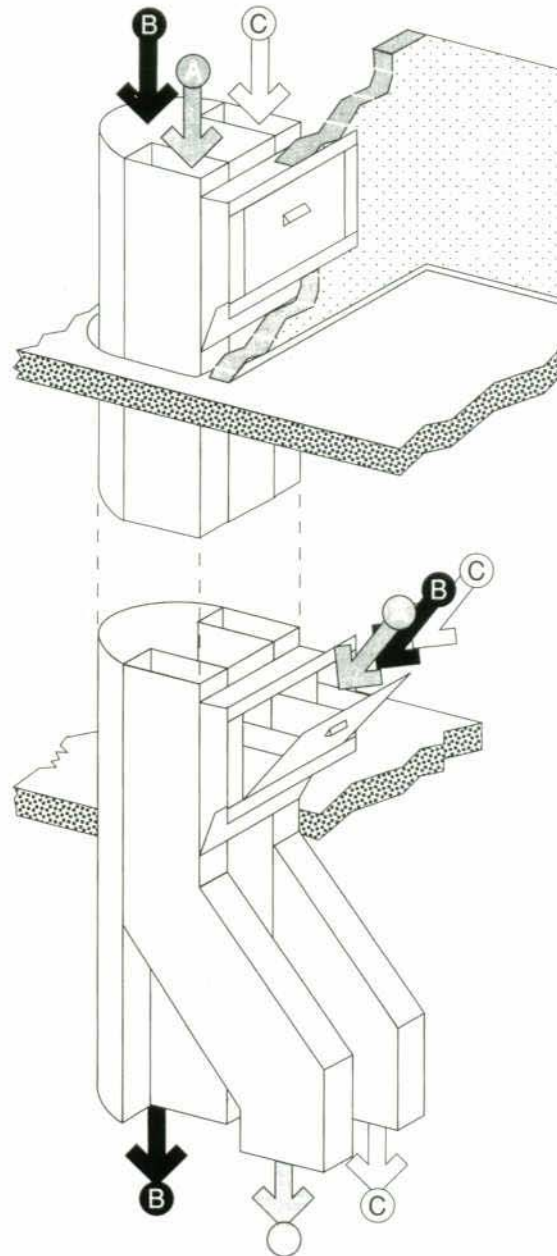
Dual Multichute

This layout would permit six segregations of waste, ie: one chute could include tin/plastic (A); non-recyclable waste (B); and paper (C). The second chute for three colors of glass: green (D); clear (E); and brown (F).



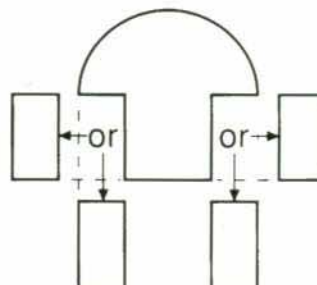
Single Multichute With Conventional Chute

This configuration provides four segregations, permitting tenants access only to the conventional chute, while leaving the Multichute for access by keyed staff only.



DISCHARGE UNIT OPTIONS

Side recycling chutes can kick out in one of two directions.



WILKINSON CHUTES

CHUTE COMPONENTS

Intake Doors

Intake Doors "W" Type

Intake doors are fabricated of Stainless Steel into panel type doors of 51mm. All Stainless Steel intake doors have a self-closing mechanism which is hydraulically controlled, for an even speed of closing, but which will not restrict the ease of opening. The mechanism is contained in a box forming part of the door frame and therefore does not restrict the opening nor project to tear material charged into the opening.

Particular attention is directed to the side hinged intake door which has been specially designed to swing open a full 180° to give full access to the intake opening.

Doors bearing Underwriters' Laboratories Canada in label have been tested and approved to carry the following rating "1-1/2 Hr. Temp. Rise 30 Min. 121°C" which indicates that after exposure to intense fire for a half hour period the unexposed face of the door has increased a maximum temperature of only 121°C.

Chrome Door

Bottom-hinged door self-latching, self-closing, Warnock Hersey 2hr. fire rating.

SIZE SYMBOL	BOTTOM HINGED
	mm
WHC1212	305 x 305
WHC1214	305 x 356
WHC1316	330 x 406
WHC1415	356 x 380
WHC1417	356 x 432
WHC1518	308 x 450
WHC1618	406 x 457

Bottom Hinged Door



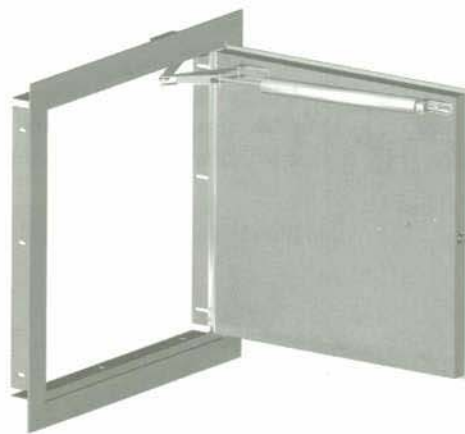
Bottom hinged hand operated intake doors, or foot operated if desired, are recommended for most rubbish chutes and linen chutes handling loose linen or small bags of linen. The doors are equipped with side checks to prevent spillage, and are 1 1/2 hr. fire rated. The clear opening available is 51mm less than the width by 75% of the height.

SIZE SYMBOL	BOTTOM HINGED
	mm
W-01	610 x 610
W-1	533 x 457
W-3	457 x 457
W-5	380 x 457
W-7	305 x 380

Note:

All dimensions are nominal size. Sizes highlighted are standard stock. All other sizes are fabricated on request.

Side Hinged Door



Square Side hinged intake doors are fabricated of the same material as the bottom hinged doors and are recommended for general bagged linen applications. This door is designed to swing a full 180° from its closed position to permit full access to the intake opening while the user is standing in front of the door. These doors are available with 1 1/2 hr. fire rating, but are limited to hand operating only.

SIZE SYMBOL	SIDE HINGED
	mm
W-24	610 x 610
W-21	533 x 533
W-18	457 x 457
W-15	380 x 380
W-12	305 x 305

Note:

All dimensions are nominal size. Sizes highlighted are standard stock. All other sizes are fabricated on request.

CHUTE COMPONENTS

Discharge Unit & Disinfecting and Sanitizing Unit

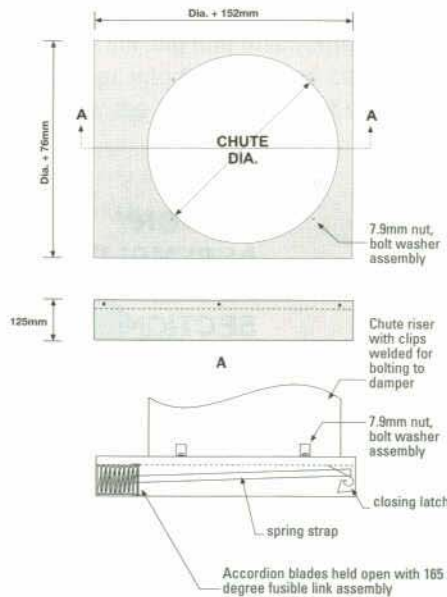
Hopper Discharge



The type "H" Discharge is used where building conditions dictate a change of direction for material to pass through a wall. The hopper sides are fabricated of the same material as the chute riser, with the bottom of the hopper being fabricated of No. 13 Ga. aluminized satin coat steel. All "H" type hoppers have a 2" drain at the low point, and are equipped with a top hinged spring counter-balanced door fusibly linked for closing. Side hinged discharge doors are available when required, the door being hung on spring type hinges. Both type doors have a cam latch to secure the door in a tightly closed position for wash down purposes. (This door is supplied with a 1 1/2 hr. label rating.)

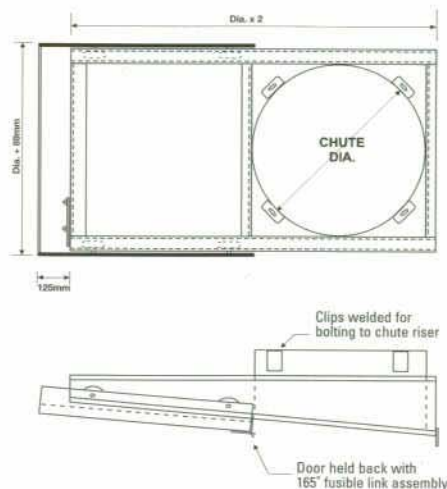
CHUTE SIZE DIAMETER	DISCHARGE DOOR SIZE
mm	mm
914	914 x 1219
711	711 x 914
610	610 x 762
508	508 x 762

Accordion Discharge



The horizontal direct type door is most commonly used when discharging directly into a bin or compactor. This door is intended to provide smoke and fire protection to the chute riser and is not designed to perform as a shut off gate.

A Discharge



Disinfecting and Sanitizing Unit

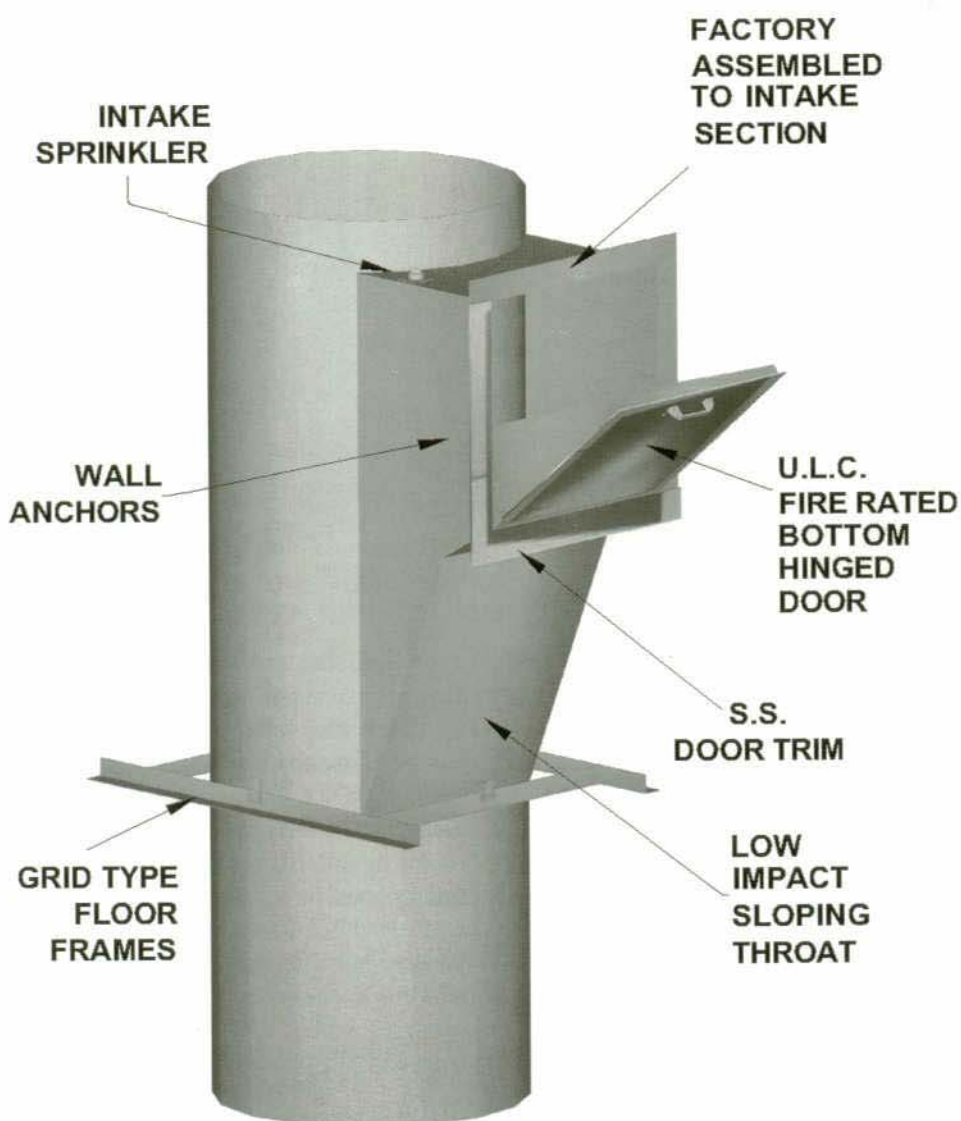


The Disinfecting and Sanitizing Unit is a tank, approximately 1 gallon, complete with dispensing valve assembly, generally located on the top cap, which dispenses a disinfectant fluid into the wash down water, and has an on/off control to permit rinsing as well. It is noted that a vacuum breaker must be installed by the plumbing trade when being hooked up. An access panel must be installed in the wall in line with the "sanitizer" to permit refilling when required.
(supplied only when specified)

WILKINSON CHUTES

CHUTE RISERS

For Linen and Rubbish



FEATURES

- No rivet or bolt protrusions into chute riser
- Factory welded joints
- Satincoat or Stainless Steel
- Low impact sloping throat
- Intermediate sprinklers
- ULC Fire rating
- Door options side hinge or bottom hinge

Optional Equipment

- Sound Dampening
- Isolation Pads
- Smoke Detectors
- Heat Detectors
- Embossed Lettering on Trim
- Hardware
- Cylinder Locks
- Foot Operator
- Key Pads

Chute equipment produced by Wilkinson Chutes Canada is fully assembled at the factory, for erecting. "All vertical seams are welded", risers are completely fabricated, horizontal seams are tapered or slips jointed (raw crimping is prohibited for horizontal connections in the riser), all doors are attached to the chute throats and each chute is delivered to the jobsite with a maximum of two sections per story.

SPECIFICATIONS

Standard Linen Chute for Loose Laundry

- 1 Chute to be Fabricated of 16 gauge Satincoat or Stainless Steel.
- 2 610mm in diameter with standard 254mm throat.
- 3 Fully assemble chute at the factory ready for installation.
- 4 Maximum of two sections per standard floor height.
- 5 Provide one expansion join per floor without bolts, clips or rivets to mar the smooth interior surface.
- 6 Crimped joints are strictly prohibited.
- 7 All vertical seams shall be welded.
- 8 All doors attached to chute throats before delivery to jobsite.

Intake Door Specification

- 1 450mm wide x 450mm high, side hinge, hand operated.
- 2 Stainless steel door front with stainless steel trim.
- 3 Noiseless self-closing by means of concealed closer.
- 4 Bearing ULC 1 1/2 hour temperature rise 30 minute 121°C label.

Discharge Specification

- 1 Type 'AC' accordion spring loaded Horizontal fire Damper. Bearing ULC 1-1/2 hour label.

Sprinkler Specification

- 1 Automatic sprinkler to be located in chute throats at top intake and alternating floors below.

Venting Specification

- 1 Vent to extend full diameter through to roof to a height of 1 metre.
- 2 Vent to be covered with a hinged rain cap with 10% air space for normal use and hold down quick release clips to allow 100% vent in case of fire.

Cleaning Specification

- 1 Flushing spray head above top intake.

Optional Chute Equipment

- 1 Sound isolation pads on floor frames
- 2 Disinfecting and sanitizing unit located above the uppermost intake
- 3 Disinfecting and sanitizing unit access door 380mm x 380mm side hinge.
- 4 Hopper type discharge 610mm x 762mm top hinge or side hinge
- 5 Cylinder locks on intake doors key alike
- 6 Electrical interlock system to permit only one door at a time to be open. Can be push button, key alike or key pad.
- 7 Electrical interlock control box to lock chute at discharge room. Can be push button, key alike or key pad.
- 8 Spray on sound dampening compound

Standard Linen Chute for Laundry Bags

- 1 Chute to be fabricated of 16 gauge Satincoat or Stainless Steel.
- 2 711mm in diameter with standard 254mm throat.
- 3 Fully assemble chute at the factory ready for installation.
- 4 Maximum of two sections per standard floor height.
- 5 Provide one expansion join per floor without bolts, clips or rivets to mar the smooth interior surface.
- 6 Crimped joints are strictly prohibited.
- 7 All vertical seams shall be welded.
- 8 All doors attached to chute throats before delivery to jobsite.

Intake Door Specification

- 1 533mm wide x 533mm high, side hinge, hand operated.
- 2 Stainless steel door front with stainless steel trim.
- 3 Noiseless self-closing by means of concealed closer.
- 4 Bearing ULC 1 1/2 hour temperature rise 30 minute 121°C label.

Discharge Specification

- 1 Type 'AC' accordion spring loaded Horizontal fire Damper. Bearing ULC 1-1/2 hour label.

Sprinkler Specification

- 1 Automatic sprinkler to be located in chute throats at top intake and alternating floors below.

Venting Specification

- 1 Vent to extend full diameter through to roof to a height of 1 metre.
- 2 Vent to be covered with a hinged rain cap with 10% air space for normal use and hold down quick release clips to allow 100% vent in case of fire.

Cleaning Specification

- 1 Flushing spray head above top intake.

Optional Chute Equipment

- 1 Sound isolation pads on floor frames
- 2 Disinfecting and sanitizing unit located above the uppermost intake
- 3 Disinfecting and sanitizing unit access door 380mm x 380mm side hinge.
- 4 Hopper type discharge 711mm x 914mm top hinge or side hinge
- 5 Cylinder locks on intake doors key alike
- 6 Electrical interlock system to permit only one door at a time to be open. Can be push button, key alike or key pad.
- 7 Electrical interlock control box to lock chute at discharge room. Can be push button, key alike or key pad.
- 8 Spray on sound dampening compound

Standard 610mm Rubbish Chute

- 1 Chute to be Fabricated of 16 gauge Satincoat or Stainless Steel.
- 2 610mm in diameter with standard 254mm throat.
- 3 Fully assemble chute at the factory ready for installation.
- 4 Maximum of two sections per standard floor height.
- 5 Provide one expansion join per floor without bolts, clips or rivets to mar the smooth interior surface.
- 6 Crimped joints are strictly prohibited.
- 7 All vertical seams shall be welded.
- 8 All doors attached to chute throats before delivery to jobsite.

Intake Door Specification

- 1 W5B 380mm wide x 457mm high, bottom hinge, hand operated.
- 2 Stainless steel door front with stainless steel trim.
- 3 Noiseless self-closing by means of concealed closer.
- 4 Self-latching with top hinged, in-swing baffles to be located on inner side of intake door
- 5 Bearing ULC 1 1/2 hour temperature rise 30 minute 121°C label.

Discharge Specification

- 1 Type 'AC' accordion spring loaded Horizontal fire Damper. Bearing ULC 1-1/2 hour label.

Sprinkler Specification

- 1 Automatic sprinkler to be located in chute throats at top intake and alternating floors below.

Venting Specification

- 1 Vent to extend full diameter through to roof to a height of 1 metre.
- 2 Vent to be covered with a hinged rain cap with 10% air space for normal use and hold down quick release clips to allow 100% vent in case of fire.

Cleaning Specification

- 1 Flushing spray head above top intake.

Optional Chute Equipment

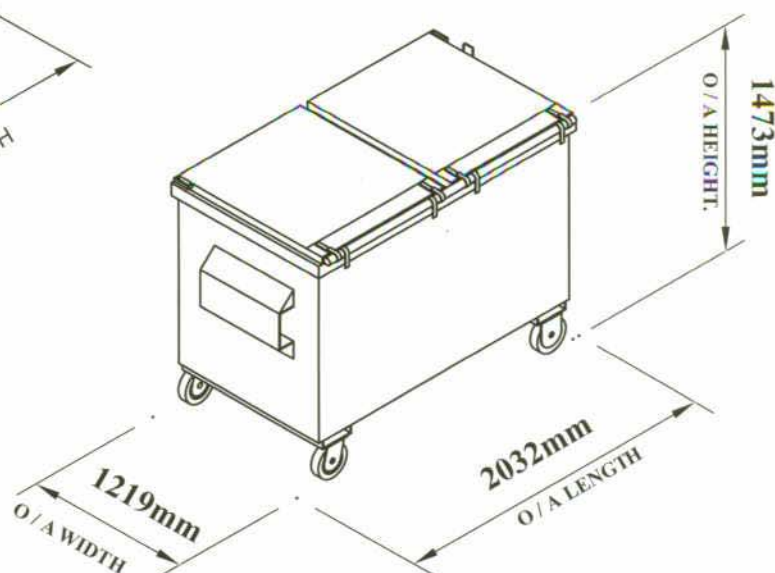
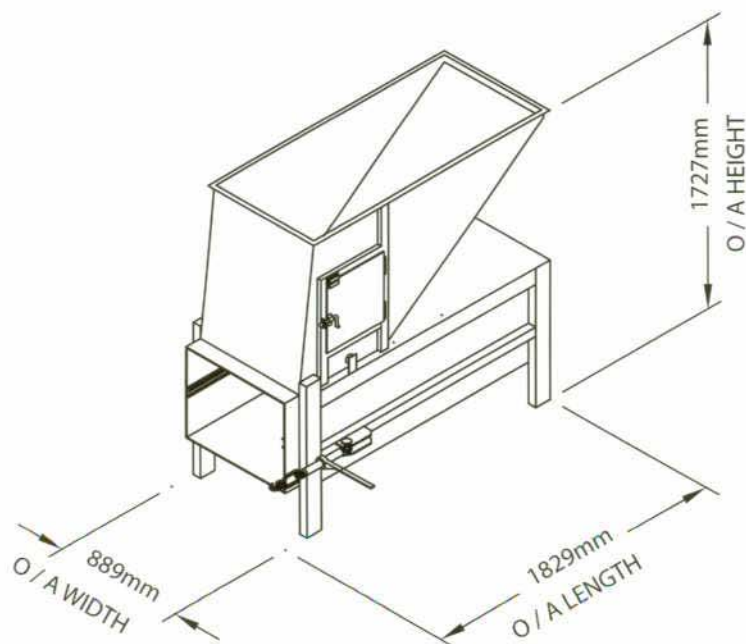
- 1 Sound isolation pads on floor frames
- 2 Disinfecting and sanitizing unit located above the uppermost intake
- 3 Disinfecting and sanitizing unit access door 380mm x 380mm side hinge.
- 4 Hopper type discharge 610mm x 762 top hinge or side hinge
- 5 Cylinder locks on intake doors key alike
- 6 Electrical interlock system to permit only one door at a time to be open. Can be push button, key alike or key pad.
- 7 Electrical interlock control box to lock chute at discharge room. Can be push button, key alike or key pad.
- 8 Spray on sound dampening compound
- 9 ADA door handles

WILKINSON CHUTES

COMPACTORS

For Apartment Applications

Wilkinson Chutes Canada offers a number of compactor models, to accommodate specific space and volume requirements. We offer design and manufacturing services, and also manufacture to specifications.



3 CUBIC YARD BIN

other sizes also available

Physical Properties

All welds shall be in accordance to SCA Standards w481-1980 & w59-1989

1. Standard 152mm x 51mm phelonic swivel and rigid casters.
2. Reinforced floor and lift pockets.
3. Designed to meet with standard AP-100 Series compactors.
4. Standard hold down bar on double steel lids.

Structure

Side structure: 12 gauge steel
Bottom of structure: 10 gauge steel
Lids: 14 gauge steel
Pockets: 7 gauge steel
Caster Pads: 10 gauge steel
Channels: 10 gauge steel
Charging Door: 10 gauge steel
Reinforcing Channels At
Casters: 4.7mm steel
Riser: 10 gauge steel

Choice of Colors

Colors: Blue, Green or Brown

Sizes

Other Sizes also available

For information on all models and on custom work, contact Wilkinson Chutes Canada

COMPACTOR CONTAINERS

Specifications

COMPACTOR MODEL	AP-100	7227	7227 H.D	4830 SHORT BODY
Clear top opening	686 mm x 559 mm	686 mm x 559 mm	686 mm x 559 mm	762 mm x 559 mm
Cycle time	50 seconds	45 seconds	39 seconds	48 seconds
Charge box capacity	.24 cu/m	.24 cu/m	.24 cu/m	.25 cu/m
Capacity per hour	13.7 cu/m	16.8 cu/m	19 cu/m	16.8 cu/m
Total normal force	"4,536 kg"	"7,938 kg"	"10,206 kg"	"7,257 kg"
Total maximum force	"5,216 kg"	9.072 kg	"11,340 kg"	"8,165 kg"
Ram face dimension	686 mm x 406 mm	686 mm x 406 mm	686 mm x 406 mm	762 mm x 432 mm
Ram penetration	102 mm	102 mm	102 mm	76 mm
Normal ram face pressure	23 p.s.i.	40 p.s.i.	52 p.s.i.	31 p.s.i.
Maximum ram face pressure	26 p.s.i.	46 p.s.i.	57 p.s.i.	35 p.s.i.
ELECTRICAL				
Motor 230 / 460 3ph	2 h.p.	3 h.p.	5 h.p.	3 h.p.
Control voltage	120 v.a.c.	120 v.a.c.	120 v.a.c.	120 v.a.c.
HYDRAULIC				
Pump	13.6 l.p.m.	18.1 l.p.m.	18.1 l.p.m.	18.1 l.p.m.
Cylinder	76 mm bore	102 mm bore	102 mm bore	two 76 mm bore
Working pressure (normal)	1,400 p.s.i.	1,400 p.s.i.	1,800 p.s.i.	1,400 p.s.i.
Cylinder rod dem.	38 mm	51 mm	51 mm	38 mm
CONSTRUCTION				
Sides	6.350 mm (1/4")	6.350 mm (1/4")	7.938 mm (5/16")	9.525 mm (3/8")
Floor of compactor	6.350 mm (1/4")	9.525 mm (3/8")	9.525 mm (3/8")	9.525 mm (3/8")
Floor of ram	6.350 mm (1/4")	9.525 mm (3/8")	9.525 mm (3/8")	9.525 mm (3/8")
Front of ram	6.350 mm (1/4")	9.525mm (3/8")	9.525mm (3/8")	9.525 mm (3/8")
Bridge angle	102mm x 76mm x 12mm	102mm x 76mm x 12mm	102mm x 76mm x 12mm	102mm x 76mm x 12mm
Drop plate	6.350 mm (1/4")	6.350 mm (1/4")	6.350 mm (1/4")	6.350 mm (1/4")
HOOKE-UP RATCHET	UP TO 5 STORIES	5 TO 15 STORIES	15 STORIES & UP	

- Optional Power Units Available
- 5 H.P. 1045/2091 L.P.M. pump 28 second cycle time
- Single side ratchet hook-up

Pressures are factory set at 1300 P.S.I. normal, 1600 P.S.I. maximum for use with small 1.5 cu/m containers to reduce container overload. If higher pressure required, please advise the factory when ordering.

All components ULC listed.

All wiring to ULC specification.

One year full warranty on all Wilkinson Chutes Canada Manufactured Components



ALBERTA

Shanahan's Ltd.
2731 57 Avenue S.E.
Calgary, Alberta
T2C 0B2
(403) 279-2782
(403) 279-3972 fax

BRITISH COLUMBIA

Shanahan's Ltd.
8400 124th Street
Surrey, British Columbia
V3W 6K1
(604) 591-5111
(604) 591-3171 fax

MANITOBA

Pari Sales
4301 Ridgewood Avenue
Winnipeg, Manitoba
R3R 2B8
(204) 832-9678
(204) 896-0373 fax

MARITIME PROVINCES

Division Ten Specialties
87 Dutchhill Drive
Moncton, New Brunswick
E1E 4E2
(506) 382-2412
(506) 383-2408 fax

Rodney Enterprises

20 Raddall Avenue
Dartmouth, Nova Scotia
B3B 1T2
(902) 468-2601
(902) 468-1441 fax

NEWFOUNDLAND

Trico Ltd.
PO Box 8187
St Johns, Newfoundland
A1B 3N4
(709) 754-1460
(709) 754-2515 fax

ONTARIO/QUEBEC

Wilkinson Chutes Canada
40 Bethridge Road
Toronto, Ontario
M9W 1N1
(416) 746-5547
(416) 740-8687 fax

Walmar Agencies

24 Gurdwara Road
Nepean, Ontario
K2E 8A2
(613) 225-9774
(613) 225-2972 fax

CK Howard Sales Agency

2008 LaSalle Blvd
Sudbury, Ontario
P3A 2A5
(705) 524-6686
(705) 524-2262 fax

SASKATCHEWAN

Wallace Construction Specialties, Ltd.
1935 Quebec Avenue
Saskatoon, Saskatchewan
S7K 1W3
(306) 653-2020
(306) 665-2142 fax

Wallace Construction Specialties, Ltd.

825 McKay Street
Regina, Saskatchewan
(306) 569-2334
(306) 757-2512 fax

WILKINSON CHUTES CANADA

A large, stylized graphic of a curved arrow pointing downwards and to the right, integrated with the company name.

International contact

416-746-5547

SEE US IN



DIRECTORY



CATALOG
FILES



CD



SWEETS.COM