

CAST STAIR NOSINGS

ABRASIVE CAST METAL

- * **LONGEST WEARING**
- * **IMPACT RESISTANT**
- * **BARRIER-FREE**
- * **ANTI-SLIP SURFACE**
- * **ECONOMICAL**



American Safety Tread cast metal stair nosings have been installed in thousands of projects throughout the United States. Virgin grain granules cast into the walking surface while the metal is in a molten state create an anti-slip tread that lasts the life of the stairway.

LONGEST WEARING: Stair nosings shown here ensure anti-slip protection for pedestrians. They also prevent wear and deterioration at the front edge of each step, greatly extending the life of the stairway.

IMPACT RESISTANT: Cast nosings are manufactured with alloys that create highly impact-resistant treads to withstand heavy traffic on interior and exterior stairways.

BARRIER FREE: These stair nosings are in full compliance with the Barrier-Free Code for all stairways. They offer a solid anti-slip surface and a gently radiused front edge with no projection beyond the riser.

ANTI-SLIP SURFACE: Maximum protection against slipping accidents is established through the proper blend of abrasive granules permanently embedded in the exposed walking surface. The process provides traction underfoot even when wet and oily.

ECONOMICAL: Our advanced manufacturing equipment and special American Safety Tread molding process assure the lowest cost per unit.

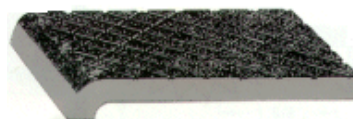
CHOICE OF METALS

ALUMACAST	Corrosion resistant, maintenance free aluminum alloy all purpose usage.
FERACAST	Cast iron all purpose usage. Will withstand heavy industrial punishment.
BRONZACAST	Rich bronze finish makes this an ideal choice for classic effect.
NICKELCAST	Combination of nickel and bronze blends with stainless steel architecture.

STYLE 801

For poured concrete or terrazo stairs

Maximum length
8'0" with wing anchors
6'6" With cast on
anchors



3" wide for steps up to 10" deep
4" wide for steps over 10" deep

820

For steel pan concrete filled stairs



STYLE 816

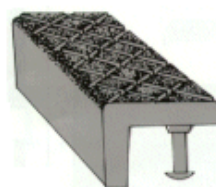
For poured stairs



Lip 1"
from underside


Curb Bar

Heavy duty at edge of loading docks. Also used as nosing in poured stairs



Anchor Options


Steel wing anchor
furnished with nuts
and bolts for
assembly in field.


Cast on anchor
integrally cast
to underside. No
field assembly
required


Tampin anchors
for installation
in existing concrete
or terrazo steps

How to specify

Stair nosing shall be style No. _____ as manufactured by American Safety Tread Company, Helena, Alabama 35080. Telephone 1-800-245-4881. Nosings shall be cast in Alumacast, Feracast, Bronzecast or Nickelcast with #24 virgin grain Silicon Carbide granules embedded into the walking surface while the matrix is in a molten state. Nosings shall terminate not more than 3" from ends of steps for poured concrete stairs; for concrete filled steel pan stairs, nosings shall be full length of steps less 1/8" clearance. Nosings shall be furnished with wing anchors, bolts and nuts or concealed cast anchors. All metals shall be furnished in natural metal finish. Feracast shall have one coat of shop applied black paint.

HOME

CAST STAIR NOSINGS EXTRUDED STAIR NOSINGS

STRUCTURAL STAIR TREADS RENOVATION TREADS DOOR THRESHOLDS

ELEVATOR DOOR SILLS